

First-class industrial equipment
since 1969

bedrunka+hirth

Workplace up to date – mehr Raum zum Arbeiten



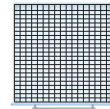


TSM®-System | Software and Hardware



Page 8

Grid subdivision



Page 18

TSM®-150



Page 20

TSM®-300



Page 26

TSM®-450



Page 38

TSM®-600



Page 48

TSM®-900



Page 60

Complete solutions | Linkage variants



Page 72

Quality from the Black Forest

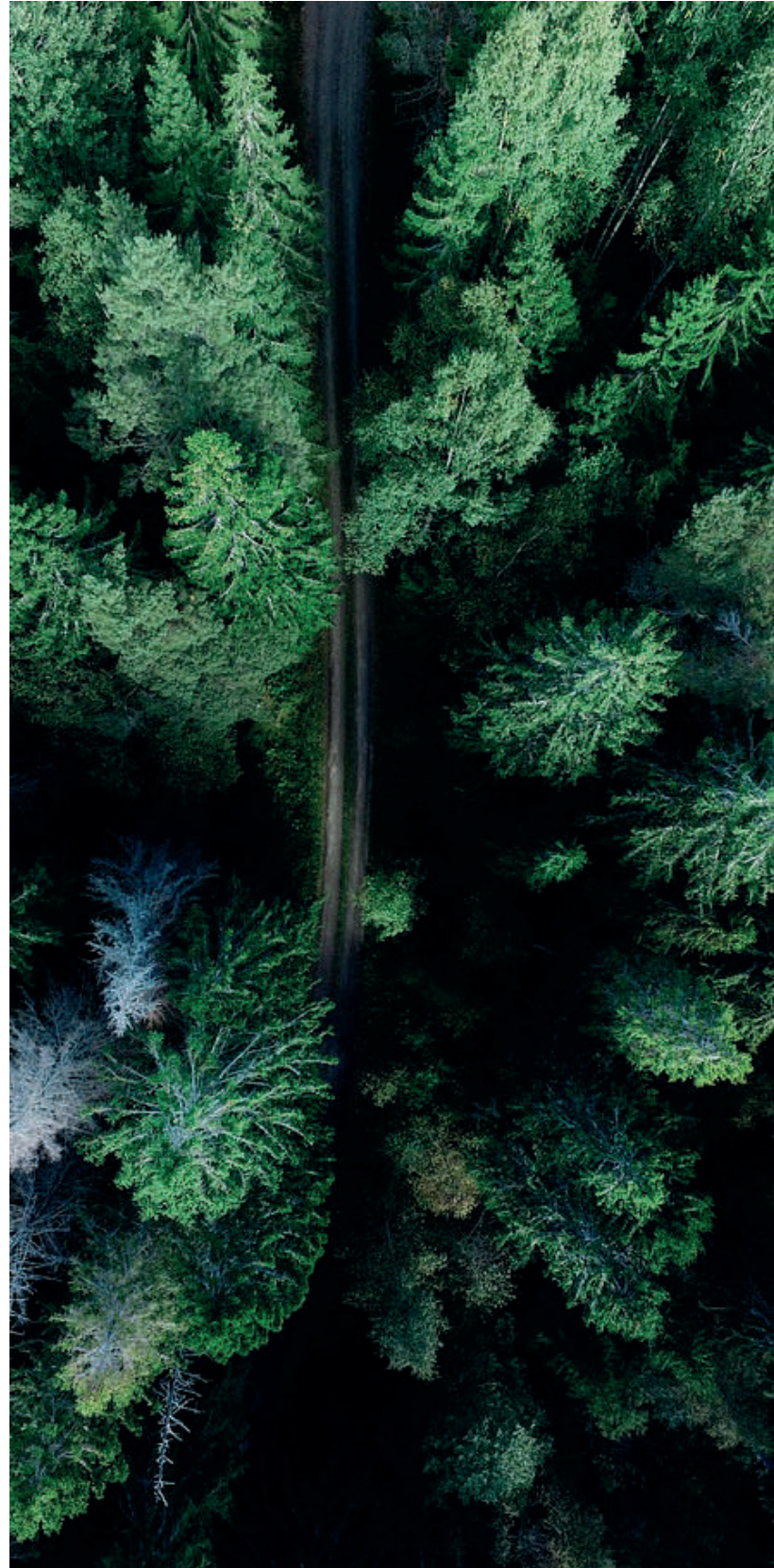
We develop and produce by making use state-of-the-art machinery. In addition to punching/nibbling robots, laser cutting systems and a fully automated bending centre, production is also optimised by welding robots. A fully automated powder coating system brings colour to your workplace.

Bedrunka+Hirth is committed to protecting the environment. To ensure the thrifty use of resources such as raw materials, energy and water, we encourage and motivate all employees to use them with a sense of responsibility. Bedrunka+Hirth avoids harmful environmental risks, reduces waste and complies with all relevant environmental regulations. Moreover, all employees are involved in improving quality and environment-related aspects within the company.

We offer our employees ongoing perspectives for the long term.

We also pay a lot of attention to ensuring a long service life and environmental compatibility of our products during the manufacturing process itself.

We are certified to: DIN ISO 9001 and DIN ISO 14001



Advice



We develop individual solutions together with you.

Planning



If you have decided on a design, our planning consultants will be pleased to advise you and talk through everything with you on site. This naturally also includes 3D drawings.

Offer



All costs are transparently calculated.
We are also pleased to offer lease or hire-purchase arrangements.

Delivery



Because all of our products are manufactured directly in Germany, we are able to keep to short lead times - despite order-based manufacturing and complex assemblies.

Commissioning



We won't leave you to figure out your new TSM® on your own. Our service engineers will accompany you through the commissioning process.

Service



Tel.: +49(0)771/9201-80
email: service@bedrunka-hirth.de

In order to fully meet your requirements and expectations, please contact us by phone or email.
We are at your disposal from Monday to Thursday from 8.00 am to 4.30 pm and on Friday from 8.00 am to 12.00 noon.

The systems

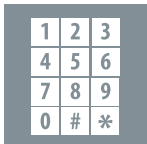
Tool-Server-Modular (TSM®)

Complete control takes place via storage and administration software. The TSM® meets your requirements with a modular drawer concept. The modules can be combined with each other to suit your needs. The TSM® is compatible with the TSS®. Both systems complement each other with the unrivalled range of variants and combinations across the board. The software is identical and therefore allows retrofits and upgrades.

Tool-Server-Systems (TSS®)

The TSS® series is the new generation of drawer cabinets. Various types of closure are available: Mechanical and electromechanical locking, simple control via storage and administration software. Connection to third-party software or proprietary Bedrunka-Hirth software. Flexible, functional and efficient.

Intuitive user login



PIN



RFID

Connection options



Interface for connecting to the company network



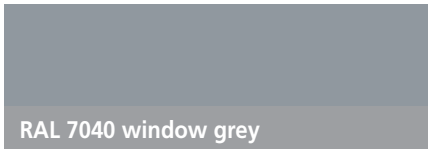
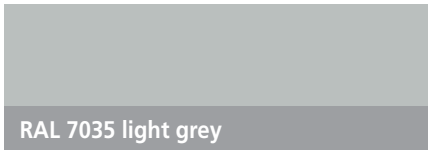
Connection to your ERP system



External storage administration

Our standard colours

All our products have an environmentally friendly powder coating.
Standard colours are only the textured and matt colours listed below. Other textures and finishes are available at extra cost.
Licensed colours of well-known brands are not available due to reasons of reutrality.



The TSM[®] Tool-Server-Modular



The TSM[®] TOOL-SERVER-MODULAR is the technical innovation in tool dispensing.

Automation in the area of tool management is constantly advancing. The Tool-Server-Modular lets you enjoy much leaner and more efficient tool management. The costs of providing, managing and using tools and small materials are significantly reduced by using our tool storage system. Increased competition in the manufacturing industry is leading to greater cost pressure and forcing companies to consider optimising their production processes. Only companies with professional resource logistics can ensure a smooth and therefore economic production process.

OUR FULLY AUTOMATED TOOL DISPENSING SYSTEM SUPPORTS YOU ON YOUR WAY TO PROFESSIONAL TOOL MANAGEMENT.

We meet your requirements with a modular drawer concept. Up to 100 modules can be connected to each other in every conceivable combination, accessible online around the clock by means of a chip card or PIN. Extensive lists and analyses which enable the tracing of tool consumption and user withdrawals are also available. The reporting software enables user-friendly evaluation of the collected data. A modern touchscreen and simple software dialogue boxes create a convenient way of working. The industrial PC is dust-protected to IP60, works without fans and is ideally suited for applications in tough manufacturing environments.

When developing the TSM[®], a lot of attention was paid to creating a modern yet classic design. Thanks to the use of high-quality materials, the consistent application of aluminium decorative elements with a polished finish, the TSM[®] is a real eye-catcher. Well-developed service allows rapid deployment of the system with customers.

TSM[®]: the most advanced tool dispensing system, a product made in Germany.

Your advantages:

- High user friendliness
- Guaranteed stock levels
- Customised subdivision, including with single covers
- Unlocked drawer and cover is displayed on the LCD display
- Dispensing to authorised persons only
- Reduction in personnel costs
- 24-hour connection possible to any ERP systems
- Can be used where access control is required
- Diverse variations
- Up to 100 modules can be combined with each other to suit your needs
- System is operated autonomously with its own processor unit
- Individual access restrictions
- Maximum utilisation through the chaotic storage principle
- Part removal possible
- No unmanaged drawer stock levels
- Professional and sorted storage of materials and tools

...the innovative, modular storage system for small parts

Cost saving:

Studies conducted at manufacturing companies reveal the following:

- In 16% of all cases, work processes are interrupted due to a lack of tools
- 20% of the machine operator's time is spent looking for tools
- 30-60% of tool stores are not properly managed

In contrast, taking effects of tool management projects into consideration shows clear success:

- 30% reduction in tool variety
- 20% reduction in provisioning effort
- 20% reduction in stock and work-in-progress levels
- 15% saving on tool consumption
- By using our tool management system, you enjoy savings through improved control, organisation and overview, automated ordering and staff optimisation, the prevention of loss and theft, falling stock level costs, employee sensitisation and third-party filling.

Software:

- User interface: Toolserver software
- Operating system: Windows Embedded 64 bit Industry Pro



Highlights

Function

Each drawer is electromechanically locked and is unlocked by the software after entering the item to be taken out. A drawer can be used as a large single compartment for long tools, e.g. measuring tools, assembly tools, drilling tools, etc.



Arrangement

The drawer can be divided into a matrix by using storage boxes. This allows a large range of tools to be managed very economically.



Security

Should security play a central role in dispensing, all drawers can also be divided into "high-security cells" for all kinds of tools. This is done by using metal covers, which are electromechanically locked using the same principle as for the drawers. Various cover sizes are available.



User guidance

The unlocked drawer and cover is displayed to the user on the touchscreen and additionally on the easy-to-read, multi-character LCD display. "Emergency unlocking" of the module is performed with a key.



Hardware



Touchscreen:

(TSM® 150 + TSM® 300):

Diagonale:	43,2 cm / 17"
Max. resolution:	1280 x 1024 px
Contrast:	1000 : 1
Brightness:	350 cd/m ²

(TSM® 450 + TSM® 600):

Diagonale:	43,2 cm / 17"
Max. resolution:	1280 x 1024 px
Contrast:	1000 : 1
Brightness:	350 cd/m ²

Dimensions:

Power supply:	DC 12V, 120W Netzteil
Frontpanel USB 3.0:	2
Power LED:	1
Powerswitch:	1
2.5" disc drive:	1
External power supply:	Yes
Wall bracket :	Yes
VESA wall bracket:	Yes (100 x100)
Width:	394 mm
Height:	332 mm
Depth:	74 mm

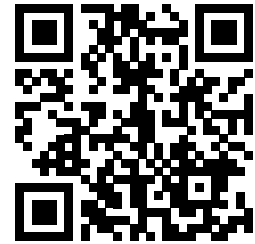
Computer:

CPU:	2,2 GHz
RAM:	from 8 GB
Graphic board:	Intel UHD Graphics 630, supports Direct X 12
HDD:	250 GB SSD 2,5"
USB 3.0 ports:	6
COM ports	2
Gigabit-LAN ports:	2 + 2x 10/100 Bits Lan

Mainboard:

Chipset:	Intel® Q370
Graphic:	integrated in CPU
Audio:	Realtek® Audio Codec
Storage:	1 x SATA III
COM:	2
Max COM:	2
LAN Typ:	Intel I211-AT und I219-LM LAN
GigabitLAN:	2
Max GigabitLAN:	2
USB 3.0:	6
Audio:	1
DP 1.2:	1
Dual Display:	no
Resolution	4096 x 2304 (DP)

Technical data



	TSM® 150	TSM® 300	TSM® 450	TSM® 600	TSM® 900
External dimensions of housing W x D x H in mm	230 x 736 x 1880	380 x 736 x 1880	550 x 725 x 1019	700 x 725 x 1019	1000 x 725 x 1019
Empty weight of housing in kg	56	60	40	44	52
Max. load in kg	680	680	1000	1000	1000
Internal drawer dimensions in mm					
Front height 50 mm	150 x 600 x 35	300 x 600 x 35	450 x 600 x 35	600 x 600 x 35	900 x 600 x 35
Front height 75 mm	–	–	450 x 600 x 60	600 x 600 x 60	900 x 600 x 60
Front height 100 mm	150 x 600 x 85	300 x 600 x 85	450 x 600 x 85	600 x 600 x 85	900 x 600 x 85
Front height 150 mm	150 x 600 x 135	300 x 600 x 135	450 x 600 x 135	600 x 600 x 135	900 x 600 x 135
Front height 200 mm	–	–	450 x 600 x 185	600 x 600 x 185	900 x 600 x 185

For compartment inserts, see page 34

Software

Having created several technical concepts and involved a number of customers, we worked with specialists to produce new, modern, Windows-based software.

The TSM® software consists of three modules coordinated to each other right down to the smallest detail. These are based on one of the most modern Windows platforms available on the market today.

The three software modules are arranged as follows:

1. TSM® – Operating system and database
2. TSM® – Terminal software
3. TSM® – Manager

1. The TSM® – Operating system and database

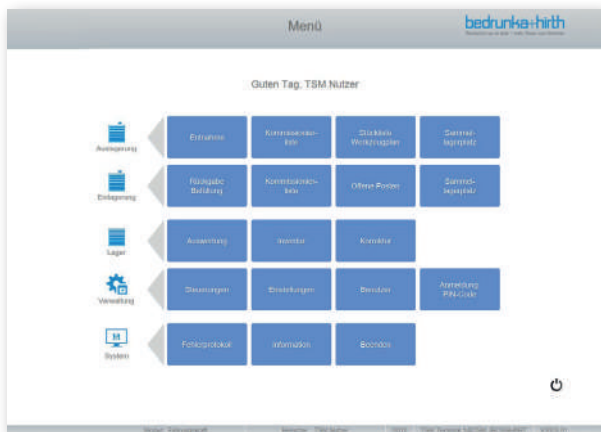
- Windows Embedded 64 bit Industry Pro
- Microsoft SQL-Server Express Edition
- Java 8
- Manual Windows Updateserver
- TSM® - Updateserver
- Wizard for simple system configuration
- Specific applications on request



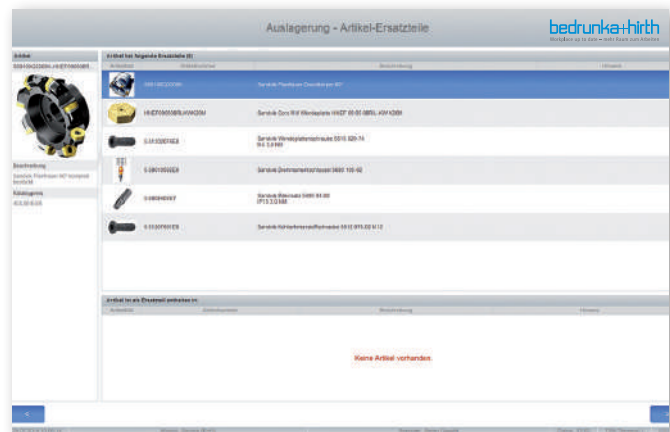
Software

2. The TSM® – Terminal software

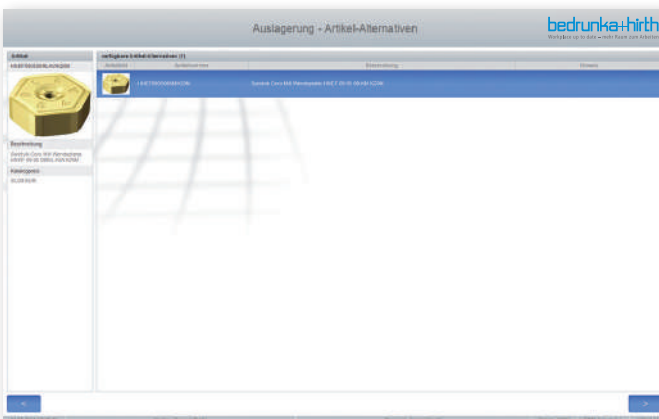
The completely new TSM® – Terminal software is noted for its simple, intuitive and clearly structured dialogue boxes, which come with a host of new functions.



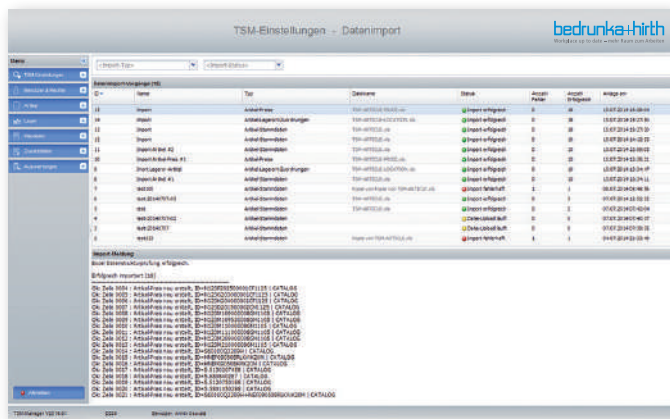
User rights can be made much more flexible thanks to the wide range of individual authorisations.



Integrated spare parts management makes it possible to break down the stored complete tools into the necessary spare parts. That simplifies the search for worn tools that have to be replaced. These are displayed via the complete tool.



It is now also possible to save an alternative for each item, in order to be able to take an equivalent replacement when the selected item is unavailable. This also enables a reduction in machine downtimes.

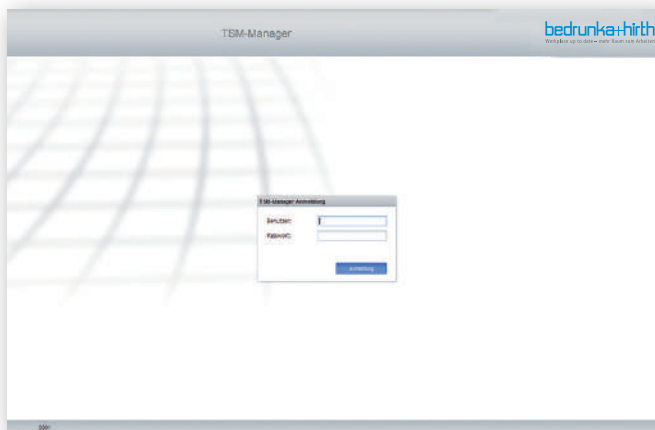


The items can initially be set up by importing Excel templates.

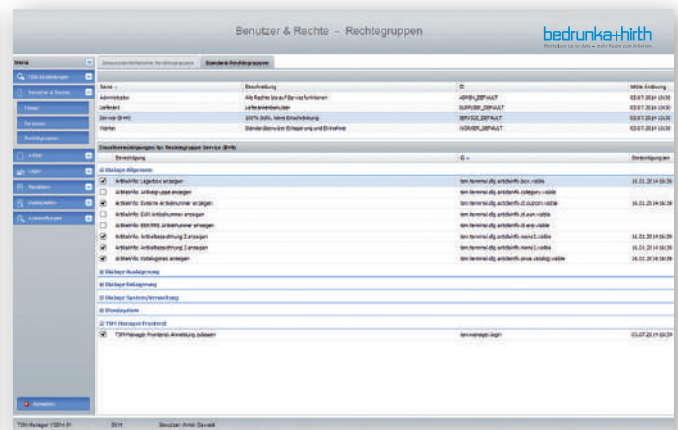
Software

3. The TSM® – Manager

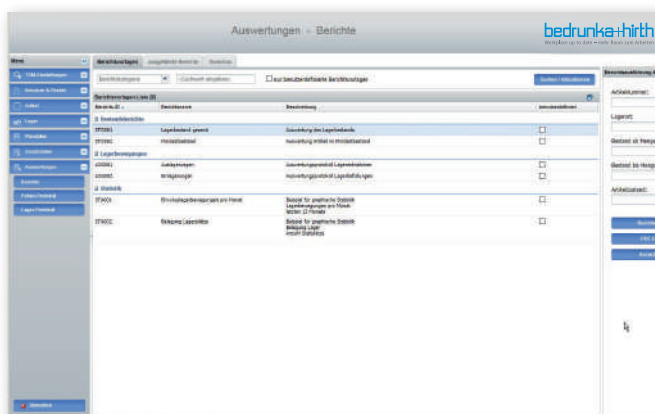
The TSM® – Manager is a complete administration, reporting and configuration program for your TSM® tool dispensing system. Designed as a web application, it enables secure access to the TSM® system from each workstation computer in your business. Access is by means of valid login data only.



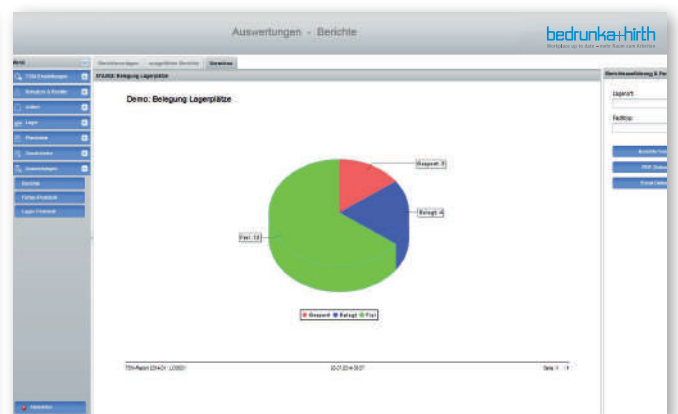
Each user needs authorisation and personal login details to access the TSM® – Manager.



The dialogue boxes are structured just as simply, intuitively and clearly as they are on the TSM® – Terminal.



The TSM® – Analysis tool has been integrated into the TSM® – Manager. A history of generated reports is kept to enable quick access to them as required.



All results can be exported to various formats. Automated report generation is also possible.

The results can be output both as a table and/or as a graphic.

Software

Software versions Functions	Bedrunka+Hirth TSM-Software	
	Standard	Optional
No different software versions	X	
PIN-Login	X	
Individual RFID-Insert reader unit (RFID reading unit is required)		X
Individual RFID-Desktop reader (RFID reading unit is required)		X
Barcode-Login (Barcode scanner is required)		X
Different login procedures can be configured per user and TSM® terminal	X	
Multilingual	X	
Multi-supplier capable	X	
Standardised evaluations	X	
Connection to ERP-System via report export and email delivery	X	
Connection to ERP-System via TSM® -DataService		X
Export of master data	X	
Administration of new tools	X	
Administration of used tools	X	
Administration of reground tools	X	
User administration	X	
User rights administration	X	
Supplier management	X	
Individual Layout	X	
Cost centre administration	X	
Product group hierarchy	X	
Installation of new modules with Plug&Work	X	
Administration of external storage places	X	
User-related favourites list	X	
Regrinding service	X	
Return of blunt tools	X	
Job number administration	X	
Parts list and accessories administration	X	
Alternative item administration	X	
Planned withdrawals via picking lists	X	
Measuring equipment management	X	
Measuring equipment management with monitoring of frequency of use	X	
Measuring equipment management combined with interval monitoring and frequency of use	X	
Networking of systems via TSM® central server	X	
Rental tool management	X	
External administration	X	
Graphic storage location view	X	
Graphic storage location configuration	X	
Individual colouring, 2-colour paintwork	X	
Automatic re-ordering	X	
Dialogue box for item assistance and information	X	
Cutting data print function	X	
Individual evaluations		X
Controlling of Kardex lift systems		X
Controlling of Kardex paternoster systems		X
Graphic evaluation		X

Optional software extension



TSM-Software licence

- TSM-Licence incl.
- TSM-Terminal software
- TSM-Manager software
- TSM-Reporting software
- TSM-Automation for standard reports
- Hardware dongle for additional data and software security, such as flexible software management
- Protection against manipulation
- Encryption of all data

Item no.

EK-6163

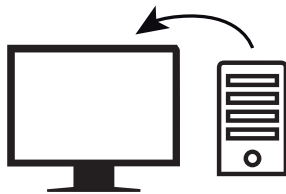


TSM®- Control license

- For paternoster systems via the customer network pre-installed control interface

Item no.

09.TSM-KDX



TSM-Control server for the controlling of third-party software

- Incl. interface for external control
- A TSM-Licence (EK6163) is additionally required..

Item no.

EK-6195



Central server incl. housing

- A TSM-Licence (EK6163) is additionally required.

Item no.

EK-6194



TSM LTE/UMTS router

- incl. dual SIM router with top-hat rail holder (excl. SIM card)
- External antennas

Item no.

EK-6303



Single price for installation, commissioning and training on site

- Within Germany incl. transport and travel costs

Item no.

Z14

Tool-Server-Modular

Grid:

R 6-24

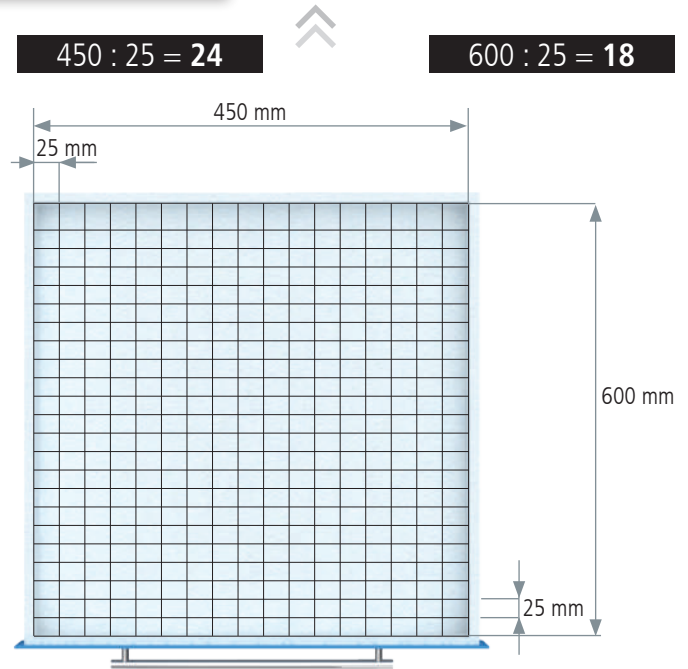
R 12-24

R 18-24

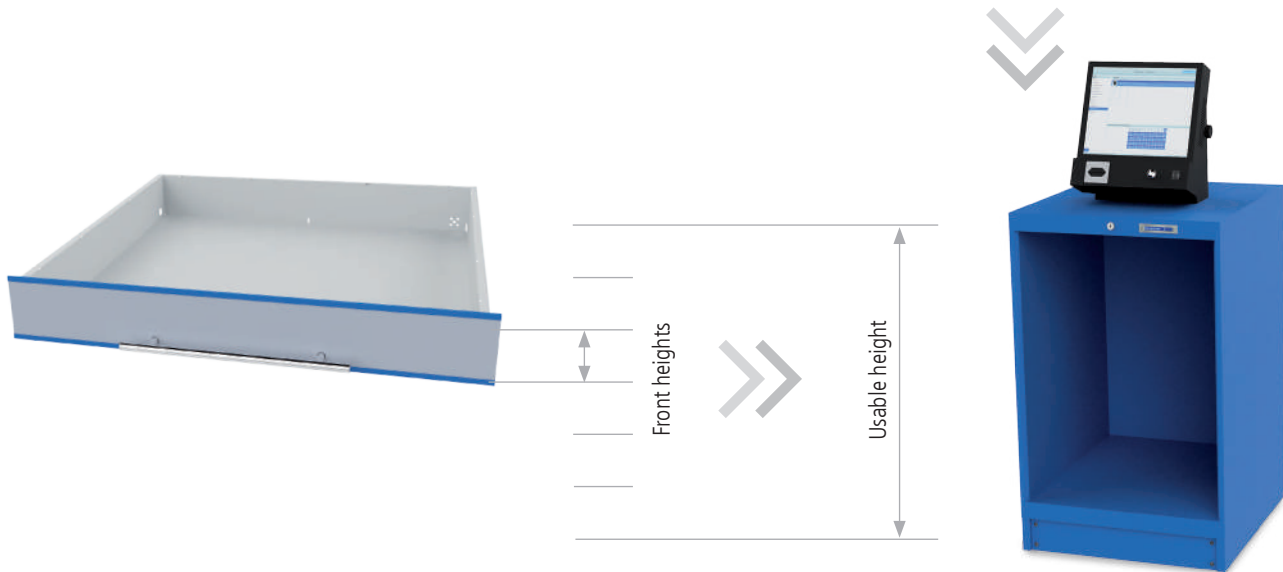
R 24-24

R 36-24

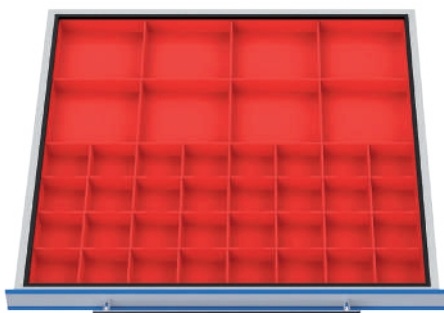
Grid subdivision



Usable drawer area



Drawer subdivision



Subdivision & accessories

Series	Series	Series	Series	Series
TSM® 150	TSM® 300	TSM® 450	TSM® 600	TSM® 900



	Housing W x D	Housing W x D	Housing W x D	Housing W x D	Housing W x D
	230 x 736	380 x 736	550 x 725	700 x 725	1000 x 725
Height	Usable heights	Usable heights	Usable heights	Usable heights	Usable heights
1131	900	900	900	900	900
1631	–	–	1400	1400	1400
1888	1700	1700	–	–	–



	Drawer W x D	Drawer W x D	Drawer W x D	Drawer W x D	Drawer W x D
	150 x 600	300 x 600	450 x 600	600 x 600	900 x 600
Front height in mm	Load capacity	Load capacity	Load capacity	Load capacity	Load capacity
50	25 kg	25 kg	60 kg	60 kg	60 kg
75	–	–	100 kg	100 kg	100 kg
100	25 kg	25 kg	100 kg	100 kg	100 kg
150	25 kg	25 kg	100 kg	100 kg	100 kg
200	–	–	100 kg	100 kg	100 kg



Series	Series	Series	Series	Series
150	300	TSM® 450	TSM® 600	TSM® 900
T736 6-24	T736 12-24	T725 18-24	T725 24-24	T725 36-24

Grid:	R 6-24	R 12-24	R 18-24	R 24-24	R 36-24
--------------	---------------	----------------	----------------	----------------	----------------

Grid:

R 6-24

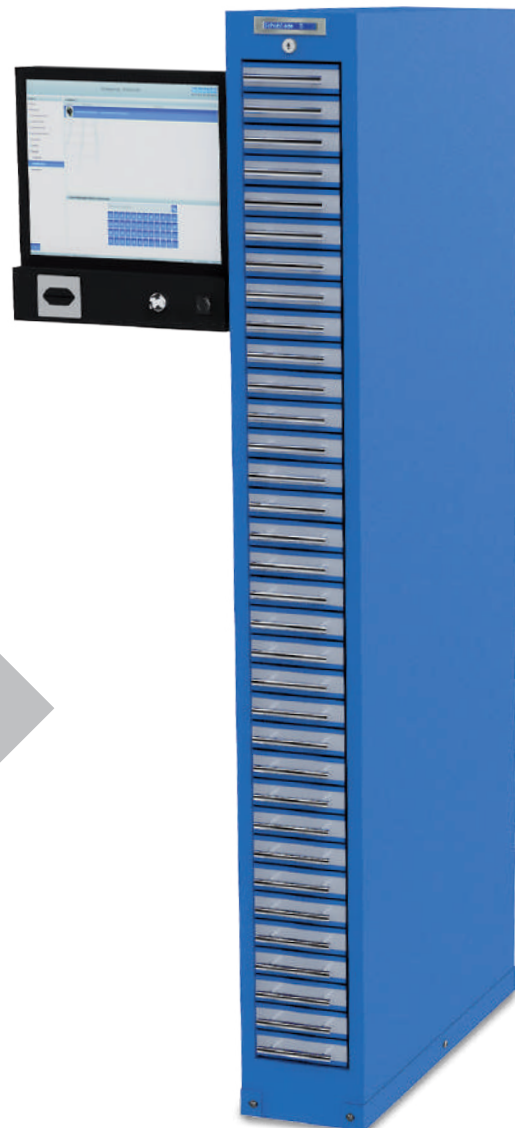
R 12-24

R 18-24

R 24-24

R 36-24

150 x 600 mm (B x T)



Designation of the Tool-Server-Module:

Version 150 corresponds to the usable dimension of the drawer width:
150 mm Clear height (usable height): **1700 mm**

Choose your drawer subdivision yourself. The sum of the individual front heights must total 1,700 mm. You can find matching drawers on the next page.

For each module, setup is with a maximum:

- 34 drawers with FH 50 mm or
- 17 drawers with FH 100 mm or
- 11 drawers with FH 150 mm + 1 drawer with FH 50 mm

- **All modules including lift truck plinth in the housing colours**

- Basic module: with Touch-Display
- Add-on module: without Touch-Display
- Drawers with full pull-out 100%
- Housing including electronics and control components
- Plus software licence

**Basic module, unequipped**

- Essential for module 150
- At least 1 x 300 mm or 2 x 150 mm extension module
- Equipped according to customer requirements
- Plus software licence

Item no.	Usable width in mm	External dimensions (WxDxH) in mm
09.T150G	150	645 x 725 x 1888

**Add-on module, unequipped**

- To expand the TSM®
- Connection via screw connection the previous module
- Equipped according to customer requirements

Item no.	Usable width in mm	External dimensions (WxDxH) in mm
09.T150.1131A	150	230 x 736 x 1131
09.T150A	150	230 x 725 x 1888

**Drawers**

- With 100% full extension
- Usable area: 150 x 600 mm

Item no.	Width in mm	Front height in mm	Shell height in mm	Load capacity in kg
09.T15.050	150	50	35	25
09.T15.100	150	100	85	25
09.T15.150	150	150	135	25

Grid:

R 6-24

R 12-24

R 18-24

R 24-24

R 36-24

Drawers with cover inserts



Drawer FH 50 mm

- Usable dimension 150 x 600 x 35 mm

Item no.	Dimensions in mm (WxDxH)
09.T15.050	150 x 600 x 50



Drawer FH 100 mm

- Usable dimension 150 x 600 x 85 mm

Item no.	Dimensions in mm (WxDxH)
09.T15.100	150 x 600 x 100



Drawer FH 150 mm

- Usable dimension 150 x 600 x 135 mm

Item no.	Dimensions in mm (WxDxH)
09.T15.150	150 x 600 x 150



Cover base for FH 50 mm

- Usable height 32 mm

Item no.	Dimensions in mm (WxDxH)
09.T15KB050	150 x 600 x 50



Cover base for FH 100 mm

- Usable height 82 mm

Item no.	Dimensions in mm (WxDxH)
09.T15KB100	150 x 600 x 100



Cover base for FH 150 mm

- Usable height 132 mm

Item no.	Dimensions in mm (WxDxH)
09.T15KB150	150 x 600 x 150



Single covers 100 mm

- Usable dimension: 120 x 84 x 32 mm
120 x 84 x 82 mm
120 x 84 x 132 mm

Item no.	Dimensions in mm (WxDxH)
09.T15K10005	150 x 100 x 50
09.T15K10010	150 x 100 x 100
09.T15K10015	150 x 100 x 150



Single covers 200 mm

- Usable dimension: 120 x 184 x 32 mm
120 x 184 x 82 mm
120 x 184 x 132 mm

Item no.	Dimensions in mm (WxDxH)
09.T15K20005	150 x 200 x 50
09.T15K20010	150 x 200 x 100
09.T15K20015	150 x 200 x 150



Single covers 300 mm

- Usable dimension: 120 x 284 x 32 mm
120 x 284 x 82 mm
120 x 284 x 132 mm

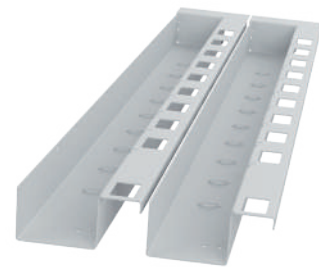
Item no.	Dimensions in mm (WxDxH)
09.T15K30005	150 x 300 x 50
09.T15K30010	150 x 300 x 100
09.T15K30015	150 x 300 x 150



Drawer FH 50 mm

- Usable dimension 150 x 600 x 35 mm

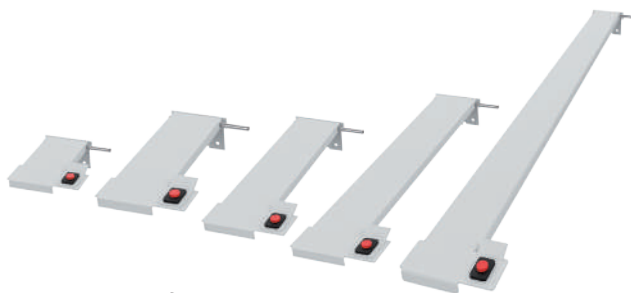
Item no.	Dimensions in mm (WxDxH)
09.T15.050	150 x 600 x 50



Double cover base only for FH 50 mm

- Width per cover base 75 mm
- Usable height 32 mm

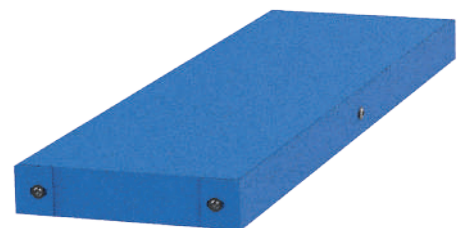
Item no.	Dimensions in mm (WxDxH)
09.T15KB2050	150 x 600 x 50



Single covers only for FH 50 mm

- Usable dimension: 44 x 84 x 32 mm
- 44 x 141 x 32 mm
- 44 x 184 x 32 mm
- 44 x 284 x 32 mm
- 44 x 584 x 32 mm

Item no.	Dimensions in mm (WxDxH)
09.T75K10005	75 x 100 x 50
09.T75K15005	75 x 150 x 50
09.T75K20005	75 x 200 x 50
09.T75K30005	75 x 300 x 50
09.T75K60005	75 x 600 x 50



Lift truck plinth for TSM® 150

Item no.	Dimensions in mm (WxDxH)
09.SOC 150	235 x 750 x 50
09.SOC 150.93	235 x 750 x 93

Grid:

R 6-24

R 12-24

R 18-24

R 24-24

R 36-24

Drawer inserts



+



⇒



Drawer

Small parts box



Drawer FH 50 mm

- Usable dimension 150 x 600 x 35 mm

Item no.	Dimensions in mm (WxDxH)
09.T15.050	150 x 600 x 50



Drawer FH 100 mm

- Usable dimension 150 x 600 x 85 mm

Item no.	Dimensions in mm (WxDxH)
09.T15.100	150 x 600 x 100



Drawer FH 150 mm

- Usable dimension 150 x 600 x 135 mm

Item no.	Dimensions in mm (WxDxH)
09.T15.150	150 x 600 x 150



Dividers

- For lateral division of the drawers

Item no.	Maße in mm (BxH)
09.T3050150	150 x 50
09.T30100150	150 x 100
09.T30150150	150 x 150

Small parts boxes



Small parts boxes

- For front height 50 mm

Item no.	Dimensions in mm (WxDxH)
53.075.075.30	75 x 75 x 28
53.150.075.30	75 x 150 x 28
53.150.150.30	150 x 150 x 28

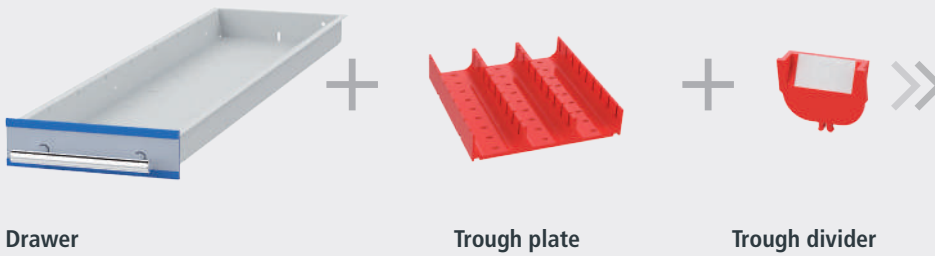


Small parts boxes

- For front height 100 mm

Item no.	Dimensions in mm (WxDxH)
53.075.075.65	75 x 75 x 65
53.150.075.65	75 x 150 x 65
53.150.150.65	150 x 150 x 65





Drawer FH 50 mm
 ■ Usable dimension 150 x 600 x 35 mm

Item no.	Dimensions in mm (WxDxH)
09.T15.050	150 x 600 x 50



Drawer FH 100 mm
 ■ Usable dimension 150 x 600 x 85 mm

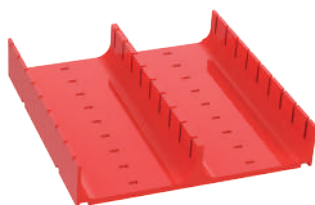
Item no.	Dimensions in mm (WxDxH)
09.T15.100	150 x 600 x 100



Drawer FH 150 mm
 ■ Usable dimension 150 x 600 x 135 mm

Item no.	Dimensions in mm (WxDxH)
09.T15.150	150 x 600 x 150

Trough platen



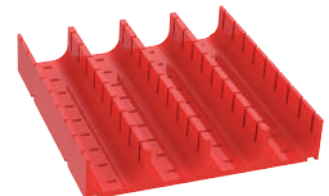
Trough plates
 ■ With 2 troughs 70 mm

Item no.	Dimensions in mm (WxDxH)
50.002.070	150 x 150 x 30



Trough plates
 ■ With 3 troughs 46 mm

Item no.	Dimensions in mm (WxDxH)
50.003.046	150 x 150 x 30



Trough plates
 ■ With 4 troughs 34 mm

Item no.	Dimensions in mm (WxDxH)
50.004.034	150 x 150 x 30

Muldensteckwände



Trough dividers
 ■ For trough plate with 2 troughs

Item no.	Breite in mm
51.002.070	70



Trough dividers
 ■ For trough plate with 3 troughs

Item no.	Breite in mm
51.003.046	46



Trough dividers
 ■ For trough plate with 4 troughs

Item no.	Breite in mm
51.004.034	34

Grid:

R 6-24

R 12-24

R 18-24

R 24-24

R 36-24

300 x 600 mm (B x T)



Designation of the Tool-Server-Module:

Version 300 corresponds to the usable dimension of the drawer width:
300 mm

Clear height (Usable height): **1700 mm**

Choose your drawer subdivision yourself. The sum of the individual front heights must total 1,700 mm. You can find matching drawers on the next page.

For each module, setup is with a maximum:

- 34 drawers with FH 50 mm or
- 17 drawers with FH 100 mm or
- 11 drawers with FH 150 mm + 1 drawer with FH 50 mm

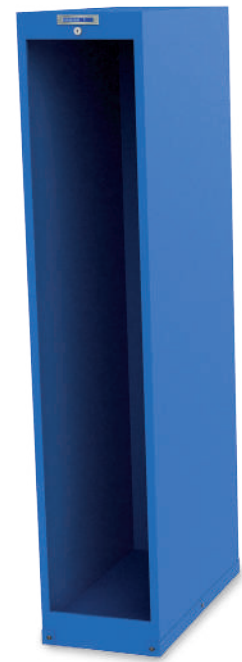
**Basic module, unequipped**

- Equipped according to customer requirements
- Plus software licence

Item no.	Usable width in mm	External dimensions (WxDxH) in mm
09.T300G	300	795 x 725 x 1888

- **All modules including lift truck plinth in the housing colours**

- Basic module: with Touch-Display
- Add-on module: without Touch-Display
- Drawers with full pull-out 100%
- Housing including electronics and control components
- Plus software licence

**Add-on module, unequipped**

- To expand the TSM®
- Connection via screw connection the previous module
- Equipped according to customer requirements

Item no.	Usable width in mm	External dimensions (WxDxH) in mm
09.T300.1131A	300	380 x 725 x 1131
09.T300A	300	380 x 725 x 1888

**Drawers**

- With 100% full extension
- Usable area: 300 x 600 mm

Item no.	Width in mm	Front height in mm	Shell height in mm	Load capacity in kg
09.T30.050	300	50	35	25
09.T30.100	300	100	85	25
09.T30.150	300	150	135	25

Grid:

R 6-24

R 12-24

R 18-24

R 24-24

R 36-24

Drawers with cover inserts



Drawer FH 50 mm

- Usable dimension 300 x 600 x 35 mm

Item no.	Dimensions in mm (WxDxH)
09.T30.050	300 x 600 x 50

Drawer FH 100 mm

- Usable dimension 300 x 600 x 85 mm

Item no.	Dimensions in mm (WxDxH)
09.T30.100	300 x 600 x 100

Drawer FH 150 mm

- Usable dimension 300 x 600 x 135 mm

Item no.	Dimensions in mm (WxDxH)
09.T30.150	300 x 600 x 150

Double cover base for FH 50 mm

- Width per cover base 150 mm
- Usable height 32 mm

Item no.	Dimensions in mm (WxDxH)
09.T30KB050	300 x 600 x 50

Double cover base for FH 100 mm

- Width per cover base 150 mm
- Usable height 82 mm

Item no.	Dimensions in mm (WxDxH)
09.T30KB100	300 x 600 x 100

Double cover base for FH 150 mm

- Width per cover base 150 mm
- Usable height 132 mm

Item no.	Dimensions in mm (WxDxH)
09.T30KB150	300 x 600 x 150

Single covers 100 mm

- Usable dimension: 120 x 84 x 32 mm
120 x 84 x 82 mm
120 x 84 x 132 mm

Item no.	Dimensions in mm (WxDxH)
09.T15K10005	150 x 100 x 50
09.T15K10010	150 x 100 x 100
09.T15K10015	150 x 100 x 150

Single covers 200 mm

- Usable dimension: 120 x 184 x 32 mm
120 x 184 x 82 mm
120 x 184 x 132 mm

Item no.	Dimensions in mm (WxDxH)
09.T15K20005	150 x 200 x 50
09.T15K20010	150 x 200 x 100
09.T15K20015	150 x 200 x 150

Single covers 300 mm

- Usable dimension: 120 x 284 x 32 mm
120 x 284 x 82 mm
120 x 284 x 132 mm

Item no.	Dimensions in mm (WxDxH)
09.T15K30005	150 x 300 x 50
09.T15K30010	150 x 300 x 100
09.T15K30015	150 x 300 x 150



Drawer FH 50 mm

- Usable dimension 300 x 600 x 35 mm

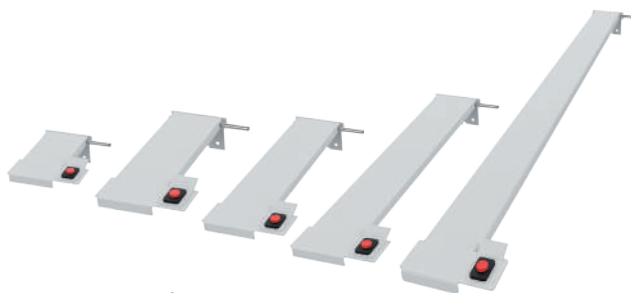
Item no.	Dimensions in mm (WxDxH)
09.T30.050	300 x 600 x 50



4-compartment cover base only for FH 50 mm

- Width per cover base 75 mm
- Usable height 32 mm

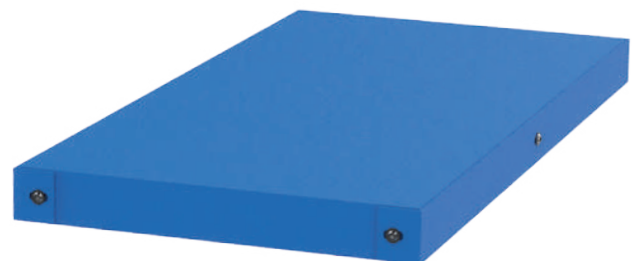
Item no.	Dimensions in mm (WxDxH)
09.T30KB4050	300 x 600 x 50



Single covers only for FH 50 mm

- Usable dimension: 44 x 84 x 32 mm
- 44 x 141 x 32 mm
- 44 x 184 x 32 mm
- 44 x 284 x 32 mm
- 44 x 584 x 32 mm

Item no.	Dimensions in mm (WxDxH)
09.T75K10005	75 x 100 x 50
09.T75K15005	75 x 150 x 50
09.T75K20005	75 x 200 x 50
09.T75K30005	75 x 300 x 50
09.T75K60005	75 x 600 x 50



Lift truck plinth for TSM® 300

Item no.	Dimensions in mm (WxDxH)
09.SOC300	385 x 750 x 50
09.SOC300.93	385 x 750 x 93

Grid:

R 6-24

R 12-24

R 18-24

R 24-24

R 36-24

Drawers with cover inserts



Drawer

Cover base

Single cover



Drawer FH 50 mm

- Usable dimension 300 x 600 x 35 mm

Item no.	Dimensions in mm (WxDxH)
09.T30.050	300 x 600 x 50



Drawer FH 100 mm

- Usable dimension 300 x 600 x 85 mm

Item no.	Dimensions in mm (WxDxH)
09.T30.100	300 x 600 x 100



Drawer FH 150 mm

- Usable dimension 300 x 600 x 135 mm

Item no.	Dimensions in mm (WxDxH)
09.T30.150	300 x 600 x 150



Cover base for FH 50 mm

- Width per cover base 300 mm
- Usable height 32 mm

Item no.	Dimensions in mm (WxDxH)
09.T300KB050	300 x 600 x 50



Cover base for FH 100 mm

- Width per cover base 300 mm
- Usable height 82 mm

Item no.	Dimensions in mm (WxDxH)
09.T300KB100	300 x 600 x 100



Cover base for FH 150 mm

- Width per cover base 300 mm
- Usable height 132 mm

Item no.	Dimensions in mm (WxDxH)
09.T300KB150	300 x 600 x 150



Single covers 100 mm

- Usable dimension: 270 x 84 x 32 mm
270 x 84 x 82 mm
270 x 84 x 132 mm

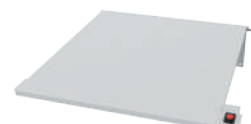
Item no.	Dimensions in mm (WxDxH)
09.T30K10005	300 x 100 x 50
09.T30K10010	300 x 100 x 100
09.T30K10015	300 x 100 x 150



Single covers 200 mm

- Usable dimension: 270 x 184 x 32 mm
270 x 184 x 82 mm
270 x 184 x 132 mm

Item no.	Dimensions in mm (WxDxH)
09.T30K20005	300 x 200 x 50
09.T30K20010	300 x 200 x 100
09.T30K20015	300 x 200 x 150



Single covers 300 mm

- Usable dimension: 270 x 284 x 32 mm
270 x 284 x 82 mm
270 x 284 x 132 mm

Item no.	Dimensions in mm (WxDxH)
09.T30K30005	300 x 300 x 50
09.T30K30010	300 x 300 x 100
09.T30K30015	300 x 300 x 150

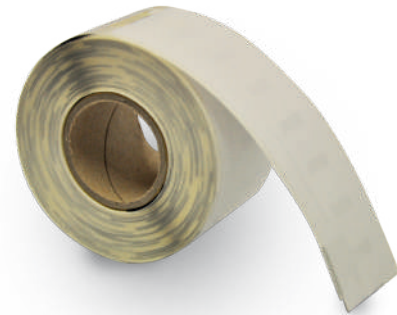
Accessories



Label printer with network connection incl. setup and standard label template

- Printer language ZPL
- Print speed: 127 mm/s
- Print resolution 203 dpi, direct thermal printing
- Weight: 1.4 kg
- With power cable, power pack, USB cable, Windows printer driver

Item no.	Dimensions in mm (WxDxH)
09.ETKD.LAN	171 x 210 x 152



Standard labels

- Paper, white
- Permanently adhesive
- 130 labels per roll

Item no.	Dimensions in mm (WxDxH)
09.ETK.89.28	89 x 28



Card reader

- The newly developed RFID card readers make it possible to integrate your existing access system.

Item no.
EK-5874



Barcode scanner

- The innovative barcode scanner reads 1D barcodes and 2D-QR codes in a single device including foot

Item no.
EK-5873

Grid: R 6-24 R 12-24 R 18-24 R 24-24 R 36-24

Drawer inserts



Drawer



Small parts box



Drawer FH 50 mm

- Usable dimension 300 x 600 x 35 mm

Item no.	Dimensions in mm (WxDxH)
09.T30.050	300 x 600 x 50



Drawer FH 100 mm

- Usable dimension 300 x 600 x 85 mm

Item no.	Dimensions in mm (WxDxH)
09.T30.100	300 x 600 x 100



Drawer FH 150 mm

- Usable dimension 300 x 600 x 135 mm

Item no.	Dimensions in mm (WxDxH)
09.T30.150	300 x 600 x 150

Smart parts boxes



Dividers

- For lateral division of the drawers

Item no.	Maße in mm (B x H)
09.T3050300	300 x 50
09.T30100300	300 x 100
09.T30150300	300 x 150



Small parts box

- For Front height 50 mm

Item no.	Dimensions in mm (WxDxH)
53.075.075.30	75 x 75 x 28
53.150.075.30	75 x 150 x 28
53.150.150.30	150 x 150 x 28



Small parts box

- For Front height 100 mm

Item no.	Dimensions in mm (WxDxH)
53.075.075.65	75 x 75 x 65
53.150.075.65	75 x 150 x 65
53.150.150.65	150 x 150 x 65





Drawer FH 50 mm

- Usable dimension 300 x 600 x 35 mm

Item no.	Dimensions in mm (WxDxH)
09.T30.050	300 x 600 x 50



Drawer FH 100 mm

- Usable dimension 300 x 600 x 85 mm

Item no.	Dimensions in mm (WxDxH)
09.T30.100	300 x 600 x 100

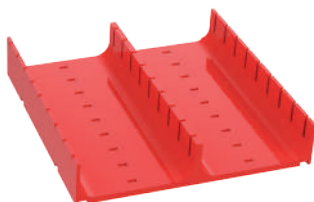


Drawer FH 150 mm

- Usable dimension 300 x 600 x 135 mm

Item no.	Dimensions in mm (WxDxH)
09.T30.150	300 x 600 x 150

Trough platen



Trough plate

- With 2 troughs 70 mm

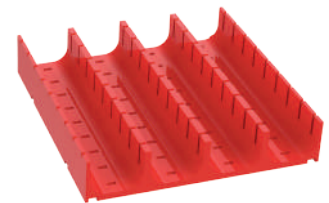
Item no.	Dimensions in mm (WxDxH)
50.002.070	150 x 150 x 30



Trough plate

- With 3 troughs 46 mm

Item no.	Dimensions in mm (WxDxH)
50.003.046	150 x 150 x 30



Trough plate

- With 4 troughs 34 mm

Item no.	Dimensions in mm (WxDxH)
50.004.034	150 x 150 x 30

Trough dividers



Trough divider

- For trough plate with 2 troughs

Item no.	Width in mm
51.002.070	70



Trough divider

- For trough plate with 3 troughs

Item no.	Width in mm
51.003.046	46



Trough divider

- For trough plate with 4 troughs

Item no.	Width in mm
51.004.034	34

Grid:

R 6-24

R 12-24

R 18-24

R 24-24

R 36-24

Lockable compartments



Lockable compartment

- Door height 200 mm
- Usable dimension: 265 x 575 x 170 mm (WxDxH)

Item no.	Dimensions in mm (WxDxH)
09.T30.F200	300 x 600 x 200



Lockable compartment

- Door height 300 mm
- Usable dimension: 265 x 575 x 270 mm (WxDxH)

Item no.	Dimensions in mm (WxDxH)
09.T30.F300	300 x 600 x 300



Lockable compartment

- Door height 400 mm
- Usable dimension: 265 x 575 x 370 mm (WxDxH)

Item no.	Dimensions in mm (WxDxH)
09.T30.F400	300 x 600 x 400



Lockable compartment

- Door height 500 mm
- Usable dimension: 265 x 575 x 470 mm (WxDxH)

Item no.	Dimensions in mm (WxDxH)
09.T30.F500	300 x 600 x 500



Lockable compartment

- Door height 600 mm
- Usable dimension: 265 x 575 x 570 mm (WxDxH)

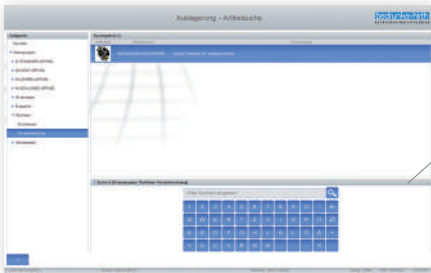
Item no.	Dimensions in mm (WxDxH)
09.T30.F600	300 x 600 x 600



- All modules including lift truck plinth in the housing colours



LCD display + emergency unlocking



Touch screen display



Tool-Server-Modular

consisting of:

- 1x basic module 150 mm with touch screen display
- 1x extension module 300 mm, fitted with
 - 1x drawer FH 50 mm
 - 11x drawer FH 150 mm
- Software license EK6163

Item no.	Dimensions in mm (WxDxH)
09.T3015.24	1107 x 736 x 1880

Tool-Server-Modular

consisting of:

- 1x basic module 150 mm with touch screen display
- 1x extension module 300 mm, fitted with
 - 12x drawer FH 50 mm
 - 11x drawer FH 100 mm
- Software license EK6163

Item no.	Dimensions in mm (WxDxH)
09.T1530.46	1107 x 736 x 1880

Tool-Server-Modular

consisting of:

- 1x basic module 150 mm with touch screen display
- 2x extension module 150 mm, fitted with
 - 34x drawer FH 50 mm
- Software license EK6163

Item no.	Dimensions in mm (WxDxH)
09.T3X15.102	1107 x 736 x 1880

Tool-Server-Modular



Can be used for:

Industry

Handicrafts

Service companies

Medical operations

Bedrunka+Hirth offers:

On-site situation analysis

Offer creation with drawing

Profitability calculation / cost analysis

Software-interface solution

Training and induction of employees

Commissioning

Service and customer service

Extension options



Grid:

R 6-24

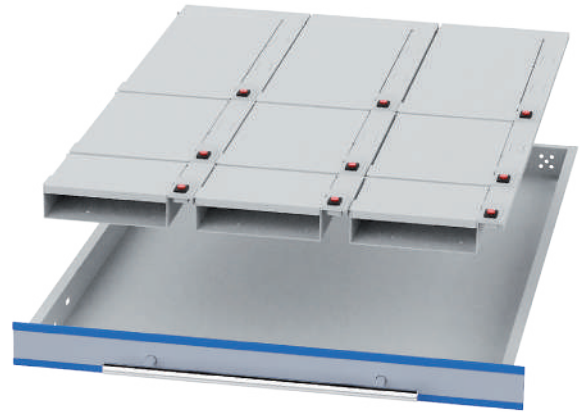
R 12-24

R 18-24

R 24-24

R 36-24

450 x 600 mm (B x T)



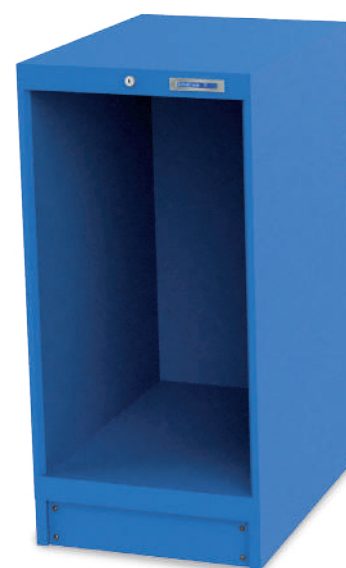
- Cabinet housing including lift truck plinth in the housing colour
- Basic module: with touch screen display
- Extension module: without touch screen display
- Drawers with full pull-out
- Housing incl. electronics and control components
- Plus software licence



Basic module

- Empty housing

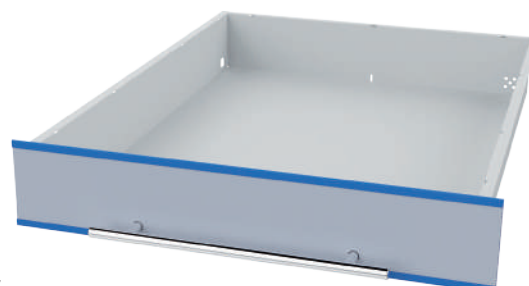
Item no.	Dimensions in mm (WxDxH)
TS5-G0500	550 x 725 x 1131



Extension module

- Empty housing

Item no.	Dimensions in mm (WxDxH)
TS5-A0500	550 x 725 x 1131
TS5-A0515	550 x 725 x 1631

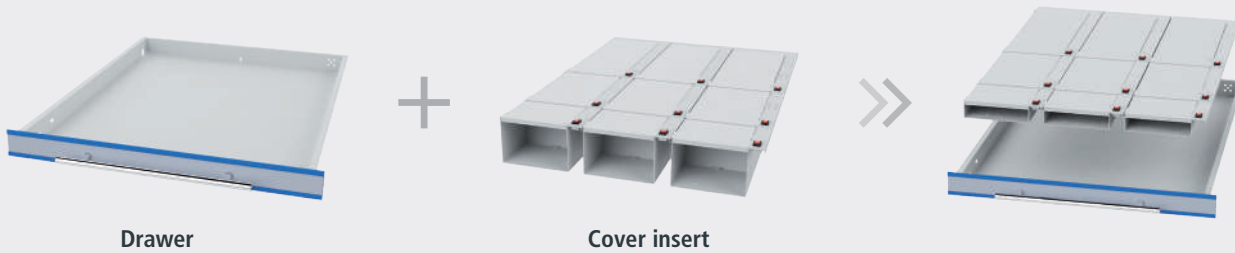


Drawer

- With full pull-out 100%
- Drawer interior dimension: 450 x 600 mm

Item no.	Width in mm	Front height in mm	Shell height in mm	Load capacity in kg
TSE-00-5-050	450	50	35	60
TSE-00-5-075	450	75	60	100
TSE-00-5-100	450	100	85	100
TSE-00-5-150	450	150	135	100
TSE-00-5-200	450	200	185	100

Cover inserts



Drawer

Cover insert

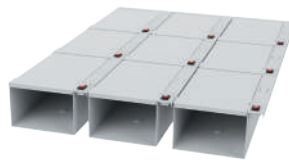
The cover inserts are made from aluminium laser-cut parts and are firmly connected to the drawers. Individual compartments can be unlocked via the WLAN connection and the software. The unlocked drawer and the compartments are shown on the monitor and on the display in the housing. After the product has been removed or replaced and the drawer pushed back into the housing, the compartment is automatically locked again.

You can also arrange the cover inserts yourself. To do this, please use the module on the next page.

Colour of Cover inserts: RAL 7035

Drawer width 450 mm

Software-controlled for internal drawer dimension 450 x 600 mm



Cover sizes:
■ 3x 3 x 200 mm each

Item no.	FH	Number
TS-5K090-050	50	9
TS-5K090-100	100	9
TS-5K090-150	150	9



Cover sizes:
■ 3x 1 x 100 mm, 1 x 200 mm, 1 x 300 mm each

Item no.	FH	Number
TS-5K091-050	50	9
TS-5K091-100	100	9
TS-5K091-150	150	9



Cover sizes:
■ 3x 2 x 100 mm, 2 x 200 mm each

Item no.	FH	Number
TS-5K120-050	50	12
TS-5K120-100	100	12
TS-5K120-150	150	12



Cover sizes:
■ 3x 3 x 100 mm, 1 x 300 mm each

Item no.	FH	Number
TS-5K121-050	50	12
TS-5K121-100	100	12
TS-5K121-150	150	12



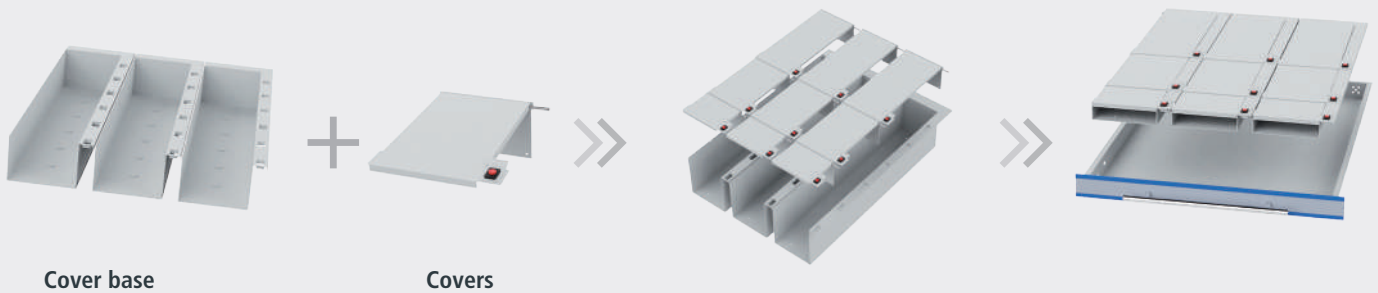
Cover sizes:
■ 3x 4 x 100 mm, 1 x 200 mm each

Item no.	FH	Number
TS-5K150-050	50	15
TS-5K150-100	100	15
TS-5K150-150	150	15



Cover sizes:
■ 3x 6 x 100 mm each

Item no.	FH	Number
TS-5K180-050	50	18
TS-5K180-100	100	18
TS-5K180-150	150	18



Cover base

Covers

Cover bases



Cover base for FH 50

- 3 x cover bases 150 x 600 mm
- For customised fitting of the cover inserts
- For arrangement, see below

Item no.	Dimensions in mm (WxDxH)
TS-5-KB050	450 x 600 x 32



Cover base for FH 100

- 3 x cover bases 150 x 600 mm
- For customised fitting of the cover inserts
- For arrangement, see below

Item no.	Dimensions in mm (WxDxH)
TS-5-KB100	450 x 600 x 82



Cover base for FH 150

- 3 x cover bases 150 x 600 mm
- For customised fitting of the cover inserts
- For arrangement, see below

Item no.	Dimensions in mm (WxDxH)
TS-5-KB150	450 x 600 x 132

Covers



Single covers 100 mm

- Usable dimension: 120 x 84 x 32 mm
120 x 84 x 82 mm
120 x 84 x 132 mm

Item no.	Dimensions in mm (WxDxH)
09.T15K10005	150 x 100 x 50
09.T15K10010	150 x 100 x 100
09.T15K10015	150 x 100 x 150



Single covers 200 mm

- Usable dimension: 120 x 184 x 32 mm
120 x 184 x 82 mm
120 x 184 x 132 mm

Item no.	Dimensions in mm (WxDxH)
09.T15K20005	150 x 200 x 50
09.T15K20010	150 x 200 x 100
09.T15K20015	150 x 200 x 150



Single covers 300 mm

- Usable dimension: 120 x 284 x 32 mm
120 x 284 x 82 mm
120 x 284 x 132 mm

Item no.	Dimensions in mm (WxDxH)
09.T15K30005	150 x 300 x 50
09.T15K30010	150 x 300 x 100
09.T15K30015	150 x 300 x 150



Drawer FH 50 mm

- Usable dimension 450 x 600 x 35 mm

Item no.	Dimensions in mm (WxDxH)
TSE-00-5-050	450 x 600 x 50



6-compartment cover base only for FH 50 mm

- Width **per cover base** 75 mm
- Usable height 32 mm

Item no.	Dimensions in mm (WxDxH)
09.T45KB6050	450 x 600 x 50



Single covers only for FH 50 mm

- Usable dimension: 44 x 84 x 32 mm
44 x 141 x 32 mm
44 x 184 x 32 mm
44 x 284 x 32 mm
44 x 584 x 32 mm

Item no.	Dimensions in mm (WxDxH)
09.T75K10005	75 x 100 x 50
09.T75K15005	75 x 150 x 50
09.T75K20005	75 x 200 x 50
09.T75K30005	75 x 300 x 50
09.T75K60005	75 x 600 x 50

Grid:

R 6-24

R 12-24

R 18-24

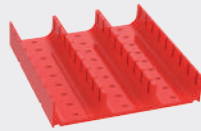
R 24-24

R 36-24

Dividing materials for customised arrangement



Drawer



Trough plate



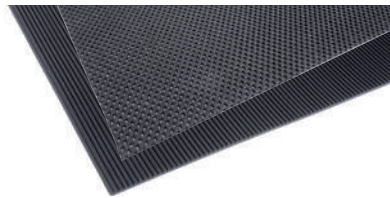
Trough divider



Corrugated rubber mat for top of cabinet

- Oil-proof
- Customised to external housing dimensions

Item no.	Module width
TS-5-60	550



Inserts for drawer

- Customised to internal drawer dimensions

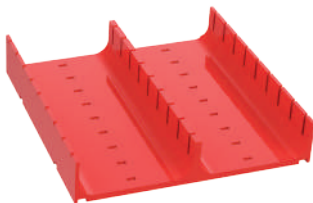
Item no.	Designs
TS-5-80	Non-slip mat
TS-5-70	Corrugated rubber



Spacer bars for drawer width 450

- For balancing and fixing trough plates and small parts boxes in the drawers, VE = 4 pcs.

Item no.	FH	Subdivisions
TS-5-01-D050	50	TP
TS-5-10-D050	50	SPB
TS-5-10-D100	100	SPB



Trough platen

- With 2 troughs 70 mm

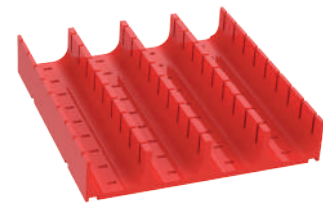
Item no.	Dimensions in mm (WxDxH)
50.002.070	150 x 150 x 30



Trough platen

- With 3 troughs 46 mm

Item no.	Dimensions in mm (WxDxH)
50.003.046	150 x 150 x 30



Trough platen

- With 4 troughs 34 mm

Item no.	Dimensions in mm (WxDxH)
50.004.034	150 x 150 x 30



Trough dividers

- For Trough plate with 2 troughs

Item no.	Width in mm
51.002.070	70



Trough dividers

- For Trough plate with 3 troughs

Item no.	Width in mm
51.003.046	46

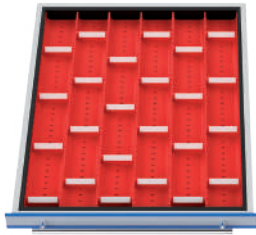


Trough dividers

- For Trough plate with 4 troughs

Item no.	Width in mm
51.004.034	34

Customisations for internal drawer dimension 450 x 600 mm



Trough platen

- 12 x TP with 2 troughs
- 24 x dividers

Item no.	FH
TS-5-01	50



Trough plates

- 4 x TP with 2 troughs + 8 x DIV
- 8 x TP with 3 troughs + 24 x DIV

Item no.	FH
TS-5-02	50



Trough platen

- 12 x TP with 3 troughs
- 36 x dividers

Item no.	FH
TS-5-03	50



Trough platen

- 4 x TP with 2 troughs + 8 x DIV
- 8 x TP with 4 troughs + 32 x DIV

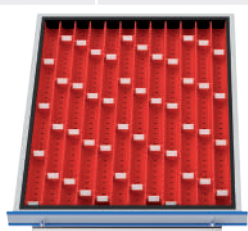
Item no.	FH
TS-5-04	50



Trough platen

- 8 x TP with 3 troughs + 24 x DIV
- 4 x TP with 4 troughs + 18 x DIV

Item no.	FH
TS-5-05	50



Trough platen

- 12 x TP with 4 troughs
- 48 x dividers

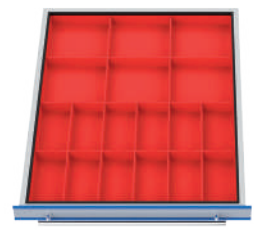
Item no.	FH
TS-5-06	50



Plastic small parts boxes

- 12 x SPB 150 x 150 mm

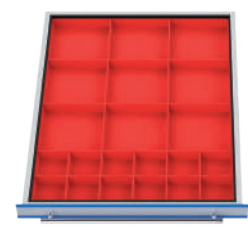
Item no.	FH
TS-5-10-050	50
TS-5-10-100	100



Plastic small parts boxes

- 12 x SPB 75 x 150 mm
- 6 x SPB 150 x 150 mm

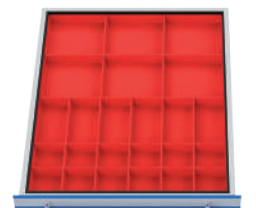
Item no.	FH
TS-5-11-050	50
TS-5-11-100	100



Plastic small parts boxes

- 12 x SPB 75 x 75 mm
- 9 x SPB 150 x 150 mm

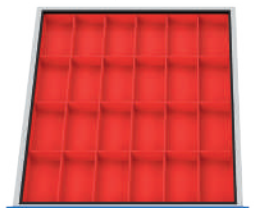
Item no.	FH
TS-5-12-050	50
TS-5-12-100	100



Plastic small parts boxes

- 12 x SPB 75 x 75 mm
- 6 x SPB 75 x 150 mm
- 6 x SPB 150 x 150 mm

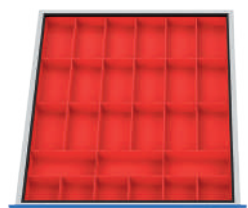
Item no.	FH
TS-5-13-050	50
TS-5-13-100	100



Plastic small parts boxes

- 24 x SPB 75 x 150 mm

Item no.	FH
TS-5-14-050	50
TS-5-14-100	100



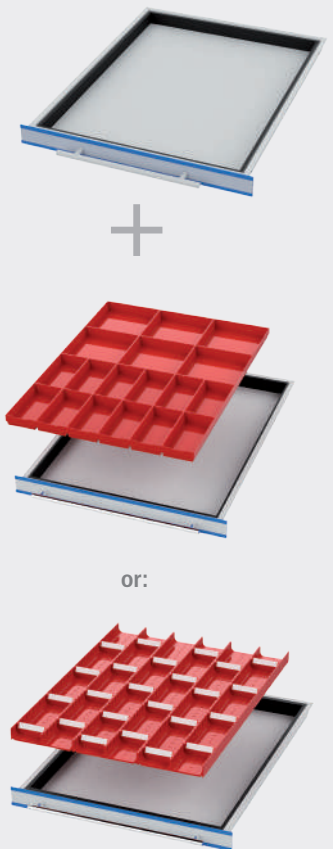
Plastic small parts boxes

- 6 x SPB 75 x 75 mm
- 21 x SPB 75 x 150 mm

Item no.	FH
TS-5-15-050	50
TS-5-15-100	100

The drawer inserts are made from high-grade plastic and can be inserted into the drawer using the modular principle. The trough plates and small parts boxes can be inserted lengthwise and widthwise.

- Basic dimensions TP: 150 x 150 mm
- Height SPB FH 50: 28 mm
- Height SPB FH 100: 65 mm
- Incl. spacer bars



or:

Grid:

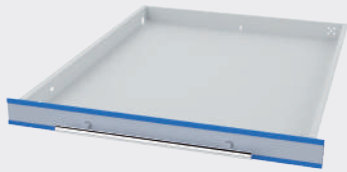
R 6-24

R 12-24

R 18-24

R 24-24

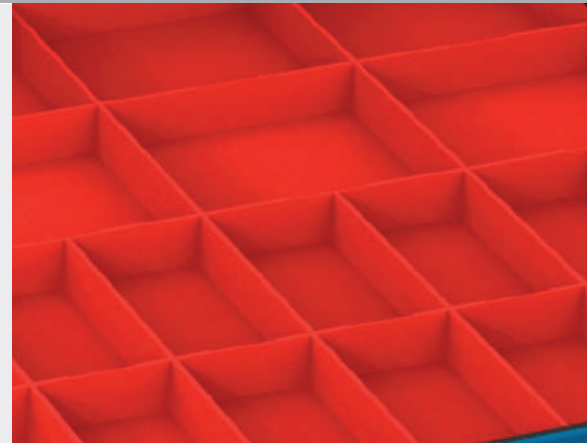
R 36-24



Drawer



Small parts box



Small parts boxes

- For front height 50 mm

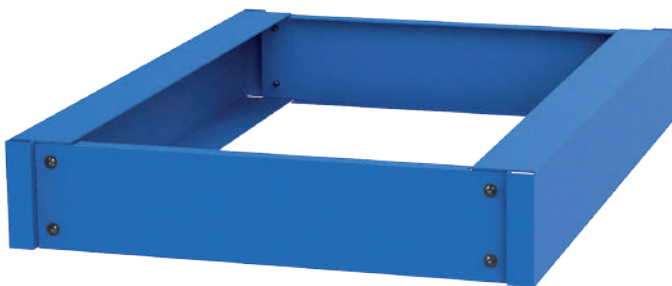
Item no.	Dimensions in mm (WxDxH)
53.075.075.30	75 x 75 x 28
53.150.075.30	75 x 150 x 28
53.150.150.30	150 x 150 x 28



Small parts boxes

- For front height 100 mm

Item no.	Dimensions in mm (WxDxH)
53.075.075.65	75 x 75 x 65
53.150.075.65	75 x 150 x 65
53.150.150.65	150 x 150 x 65

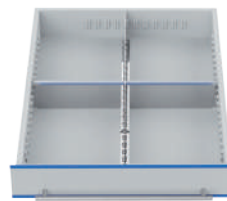


Lift truck plinth for TSM® 450

Item no.	Dimensions in mm (WxDxH)
09.SOC550	550 x 725 x 112

Metal dividers

- Scope of delivery without drawers
- For internal drawer dimension 450 x 600 mm
- Complete sets for inserting into the drawers
- Metal dividers consisting of side and centre compartment rails as well as divider plates
- The compartment rails are made from high-grade, galvanised sheet metal, the divider plates from aluminium
- Various compartment sizes from a front height of 75 mm
- The individual parts needed for a customised layout of the drawers are listed on page 46



■ 4 compartments 225 x 300 mm

Item no.	FH
TS-5-20-075	75
TS-5-20-100	100
TS-5-20-150	150
TS-5-20-200	200



■ 6 compartments 225 x 200 mm

Item no.	FH
TS-5-21-075	75
TS-5-21-100	100
TS-5-21-150	150
TS-5-21-200	200



■ 8 compartments 225 x 150 mm

Item no.	FH
TS-5-22-075	75
TS-5-22-100	100
TS-5-22-150	150
TS-5-22-200	200



■ 2 compartments 225 x 100 mm
■ 8 compartments 225 x 125 mm

Item no.	FH
TS-5-23-075	75
TS-5-23-100	100
TS-5-23-150	150
TS-5-23-200	200



■ 12 compartments 150 x 150 mm

Item no.	FH
TS-5-24-075	75
TS-5-24-100	100
TS-5-24-150	150
TS-5-24-200	200



■ 24 compartments 150 x 75 mm

Item no.	FH
TS-5-25-075	75
TS-5-25-100	100
TS-5-25-150	150
TS-5-25-200	200



■ 12 compartments 225 x 100 mm

Item no.	FH
TS-5-26-075	75
TS-5-26-100	100
TS-5-26-150	150
TS-5-26-200	200



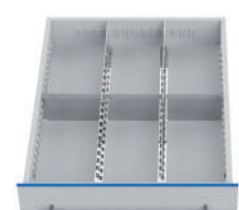
■ 12 compartments 225 x 75 mm
■ 2 compartments 225 x 150 mm

Item no.	FH
TS-5-27-075	75
TS-5-27-100	100
TS-5-27-150	150
TS-5-27-200	200



■ 16 compartments 225 x 75 mm

Item no.	FH
TS-5-28-075	75
TS-5-28-100	100
TS-5-28-150	150
TS-5-28-200	200



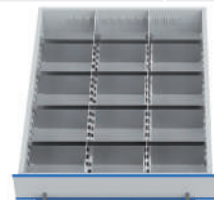
■ 6 compartments 150 x 300 mm

Item no.	FH
TS-5-29-075	75
TS-5-29-100	100
TS-5-29-150	150
TS-5-29-200	200



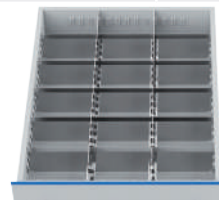
■ 6 compartments 150 x 150 mm
■ 3 compartments 150 x 300 mm

Item no.	FH
TS-5-30-075	75
TS-5-30-100	100
TS-5-30-150	150
TS-5-30-200	200



■ 3 compartments 150 x 100 mm
■ 12 compartments 150 x 125 mm

Item no.	FH
TS-5-31-075	75
TS-5-31-100	100
TS-5-31-150	150
TS-5-31-200	200



■ 18 compartments 150 x 100 mm

Item no.	FH
TS-5-32-075	75
TS-5-32-100	100
TS-5-32-150	150
TS-5-32-200	200



■ 18 compartments 150 x 75 mm
■ 3 compartments 150 x 150 mm

Item no.	FH
TS-5-33-075	75
TS-5-33-100	100
TS-5-33-150	150
TS-5-33-200	200

Grid:

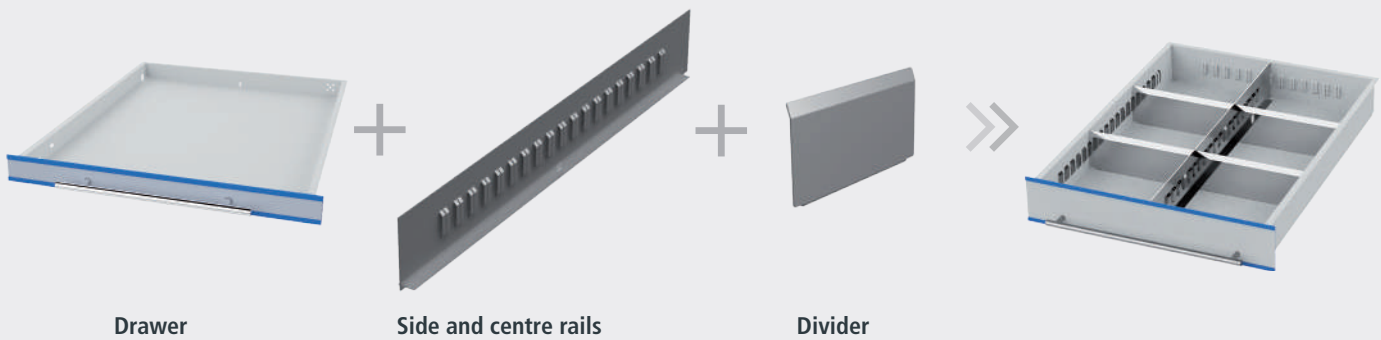
R 6-24

R 12-24

R 18-24

R 24-24

R 36-24



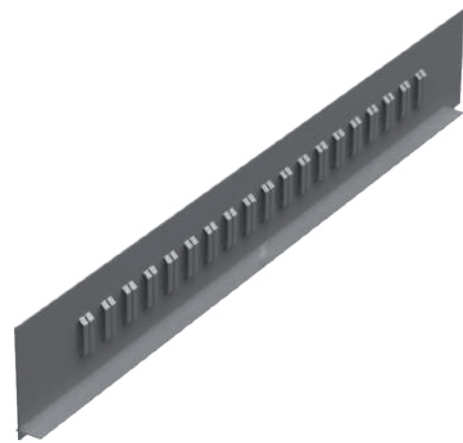
Side and centre rails



Side compartment rail for drawer width and drawer depth

- Made from high-quality galvanised sheet metal
- The side compartment rails are hung inside the drawer body
- Supplied in pairs

Item no.	Drawer depth in mm	Front height in mm
TS-5-S075	450	75
TS-5-S100	450	100
TS-5-S150	450	150
TS-5-S200	450	200



Centre compartment rails

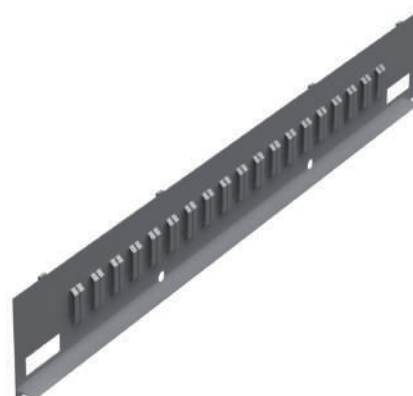
- For lengthwise subdivision of the drawers
- Made from high-quality galvanised sheet metal
- The side compartment rails are hung inside the drawer body

Item no.	Drawer depth in mm	Front height in mm
TS-7-M075	600	75
TS-7-M100	600	100
TS-7-M150	600	150
TS-7-M200	600	200

Side compartment rail for drawer width and drawer depth

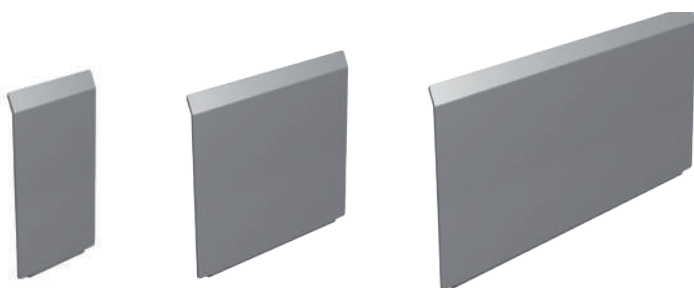
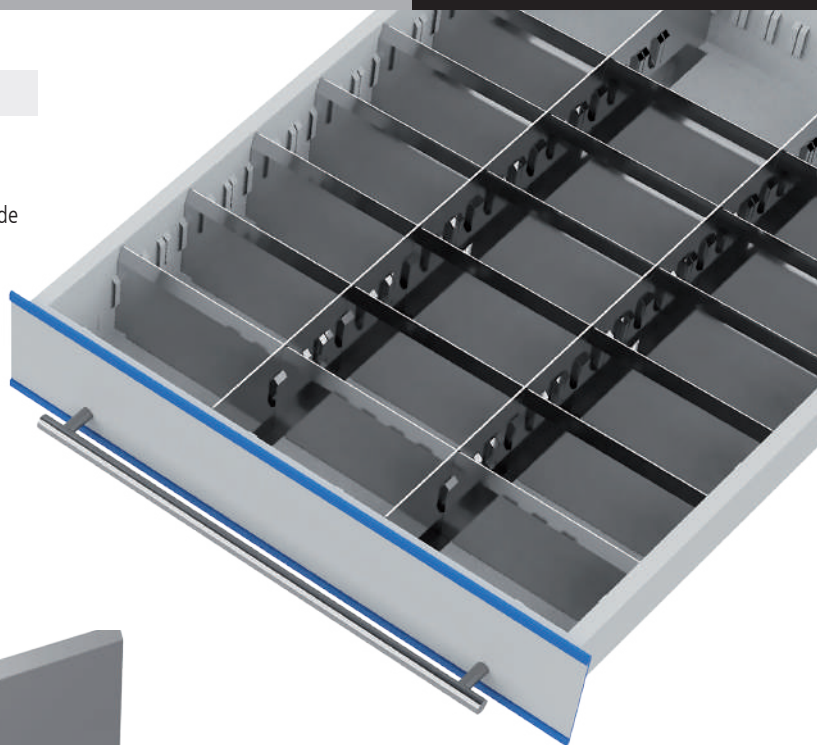
- Made from high-quality galvanised sheet metal
- The side compartment rails are hung inside the drawer body
- Supplied in pairs Longitudinal distribution

Item no.	Drawer depth in mm	Front height in mm
TS-7-S075	600	75
TS-7-S100	600	100
TS-7-S150	600	150
TS-7-S200	600	200



Dividers

- For lateral division of the drawers
- Made from aluminium
- The lightweight metal dividers can be pushed into the slots on the side and centre rails and labelled



Item no.	Divider width in mm	Front height in mm
TS-30050075	50	75
TS-30075075	75	75
TS-30100075	100	75
TS-30125075	125	75
TS-30150075	150	75
TS-30175075	175	75
TS-30200075	200	75
TS-30225075	225	75
TS-30250075	250	75
TS-30275075	275	75
TS-30300075	300	75

Item no.	Divider width in mm	Front height in mm
TS-30050100	50	100
TS-30075100	75	100
TS-30100100	100	100
TS-30125100	125	100
TS-30150100	150	100
TS-30175100	175	100
TS-30200100	200	100
TS-30225100	225	100
TS-30250100	250	100
TS-30275100	275	100
TS-30300100	300	100

Item no.	Divider width in mm	Front height in mm
TS-30050150	50	150
TS-30075150	75	150
TS-30100150	100	150
TS-30125150	125	150
TS-30150150	150	150
TS-30175150	175	150
TS-30200150	200	150
TS-30225150	225	150
TS-30250150	250	150
TS-30275150	275	150
TS-30300150	300	150

Item no.	Divider width in mm	Front height in mm
TS-30050200	50	200
TS-30075200	75	200
TS-30100200	100	200
TS-30125200	125	200
TS-30150200	150	200
TS-30175200	175	200
TS-30200200	200	200
TS-30225200	225	200
TS-30250200	250	200
TS-30275200	275	200
TS-30300200	300	200

Grid:

R 6-24

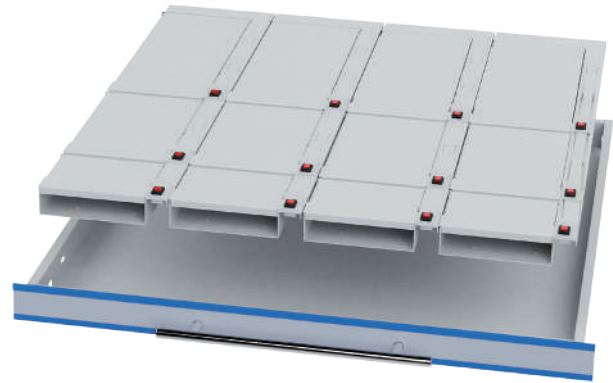
R 12-24

R 18-24

R 24-24

R 36-24

600 x 600 mm (B x T)



- Cabinet housing including lift truck plinth in the housing colour
- Basic module: with touch screen display
- Extension module: without touch screen display
- Drawers with full pull-out
- Housing incl. electronics and control components
- Plus software licence



Basic module

- Empty housing

Item no.	Dimensions in mm (WxDxH)
T55-G0700	700 x 725 x 1131

Extension module

- Empty housing

Item no.	Dimensions in mm (WxDxH)
T55-A0700	700 x 725 x 1131
T55-A0715	700 x 725 x 1631



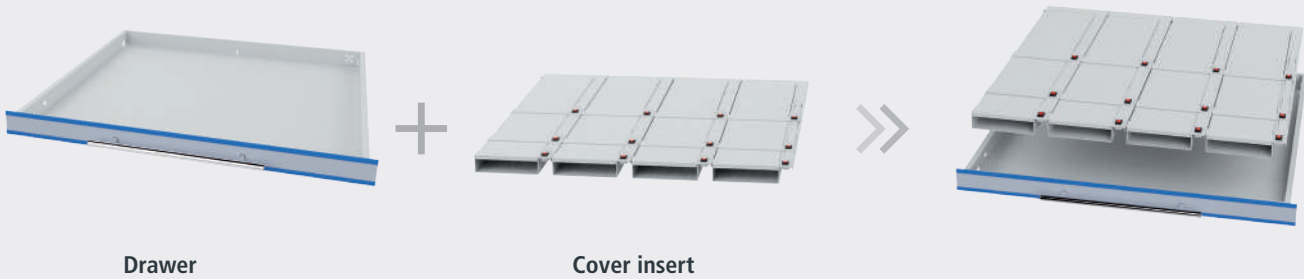
Drawers

- With full pull-out
- Usable area: 600 x 600 mm

Item no.	Width in mm	Front height in mm	Shell height in mm	Load capacity in kg
TSE-00-7-050	600	50	35	60
TSE-00-7-075	600	75	60	100
TSE-00-7-100	600	100	85	100
TSE-00-7-150	600	150	135	100
TSE-00-7-200	600	200	185	100

Grid: R 6-24 R 12-24 R 18-24 **R 24-24** R 36-24

Cover inserts



The cover inserts are made from aluminium laser-cut parts and are firmly connected to the drawers. The unlocked drawer and the compartments are shown on the monitor and on the display in the housing. After the product has been removed or replaced and the drawer pushed back into the housing, the compartment is automatically locked again.

You can also arrange the cover inserts yourself. To do this, please use the module on the next page.

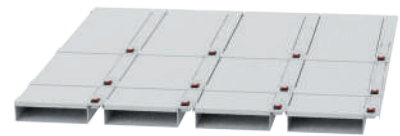
Drawer width 600 mm

- Software-controlled for internal drawer dimension 600 x 600 mm



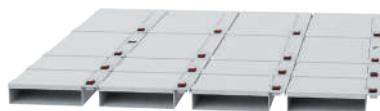
- Cover sizes:
- 4 x 3 x 200 mm each

Item no.	FH	Number
TS-7K120-050	50	12
TS-7K120-100	100	12
TS-7K120-150	150	12



- Cover sizes:
- 4 x 1 x 100 mm, 1 x 200 mm, 1 x 300 mm each

Item no.	FH	Number
TS-7K121-050	50	12
TS-7K121-100	100	12
TS-7K121-150	150	12



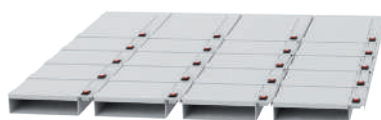
- Cover sizes:
- 4 x 2 x 100 mm, 2 x 200 mm each

Item no.	FH	Number
TS-7K160-050	50	16
TS-7K160-100	100	16
TS-7K160-150	150	16



- Cover sizes:
- 4 x 3 x 100 mm, 1 x 300 mm each

Item no.	FH	Number
TS-7K161-050	50	16
TS-7K161-100	100	16
TS-7K161-150	150	16



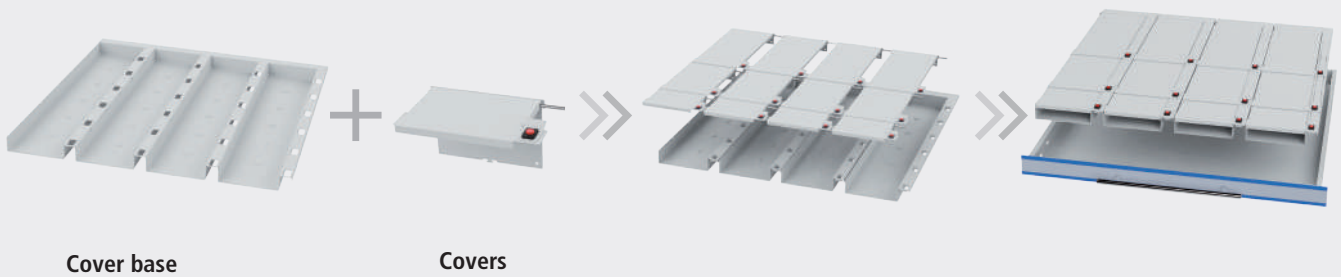
- Cover sizes:
- 4 x 4 x 100 mm, 1 x 200 mm each

Item no.	FH	Number
TS-7K200-050	50	20
TS-7K200-100	100	20
TS-7K200-150	150	20



- Cover sizes:
- 4 x 6 x 100 mm each

Item no.	FH	Number
TS-7K240-050	50	24
TS-7K240-100	100	24
TS-7K240-150	150	24



Cover base



Cover base for FH 50

- 4 x cover bases 150 x 600 mm
- For customised fitting of the cover inserts
- For arrangement, see below

Item no.	Dimensions in mm (WxDxH)
TS-7-KB050	600 x 600 x 32



Cover base für FH 100

- 4 x cover bases 150 x 600 mm
- For customised fitting of the cover inserts
- For arrangement, see below

Item no.	Dimensions in mm (WxDxH)
TS-7-KB100	600 x 600 x 82



Cover base für FH 1150

- 4 x cover bases 150 x 600 mm
- For customised fitting of the cover inserts
- For arrangement, see below

Item no.	Dimensions in mm (WxDxH)
TS-7-KB150	600 x 600 x 132

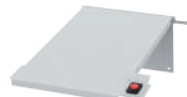
Covers



Single covers 100 mm

- Usable dimension: 120 x 84 x 32 mm
120 x 84 x 82 mm
120 x 84 x 132 mm

Item no.	Dimensions in mm (WxDxH)
09.T15K10005	150 x 100 x 50
09.T15K10010	150 x 100 x 100
09.T15K10015	150 x 100 x 150



Single covers 200 mm

- Usable dimension: 120 x 184 x 32 mm
120 x 184 x 82 mm
120 x 184 x 132 mm

Item no.	Dimensions in mm (WxDxH)
09.T15K20005	150 x 200 x 50
09.T15K20010	150 x 200 x 100
09.T15K20015	150 x 200 x 150



Single covers 300 mm

- Usable dimension: 120 x 284 x 32 mm
120 x 284 x 82 mm
120 x 284 x 132 mm

Item no.	Dimensions in mm (WxDxH)
09.T15K30005	150 x 300 x 50
09.T15K30010	150 x 300 x 100
09.T15K30015	150 x 300 x 150



Drawer FH 50 mm

- Usable dimension 600 x 600 x 35 mm

Item no.	Dimensions in mm (WxDxH)
TSE-00-7-050	600 x 600 x 50



8-compartment cover base only for FH 50 mm

- Width per cover base 75 mm
- Usable height 32 mm

Item no.	Dimensions in mm (WxDxH)
09.T60KB8050	600 x 600 x 50



Single covers only for FH 50 mm

- Usable dimension: 44 x 84 x 32 mm
44 x 141 x 32 mm
44 x 184 x 32 mm
44 x 284 x 32 mm
44 x 584 x 320 mm

Item no.	Dimensions in mm (WxDxH)
09.T75K10005	75 x 100 x 50
09.T75K15005	75 x 150 x 50
09.T75K20005	75 x 200 x 50
09.T75K30005	75 x 300 x 50
09.T75K60005	75 x 600 x 50

Grid:

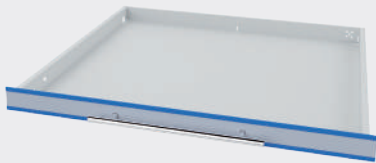
R 6-24

R 12-24

R 18-24

R 24-24

R 36-24



Drawer



Double cover base



Covers



Drawer FH 50 mm

- Usable dimension 600 x 600 x 35 mm
- Load capacity 60 Kg

Item no.	Dimensions in mm (WxDxH)
TSE-00-7-050	600 x 600 x 50



Drawer FH 100 mm

- Usable dimension 600 x 600 x 85 mm
- Load capacity 100 Kg

Item no.	Dimensions in mm (WxDxH)
TSE-00-7-100	600 x 600 x 100



Drawer FH 150 mm

- Usable dimension 600 x 600 x 135 mm
- Load capacity 100 Kg

Item no.	Dimensions in mm (WxDxH)
TSE-00-7-150	600 x 600 x 150



Double cover base for FH 50

- Width **per cover base** 300 x 600 mm
- For customised fitting of the cover inserts
- For arrangement, see below

Item no.	Dimensions in mm (WxDxH)
09.T300KB2050	600 x 600 x 32



Double cover base for FH 100

- Width **per cover base** 300 x 600 mm
- For customised fitting of the cover inserts
- For arrangement, see below

Item no.	Dimensions in mm (WxDxH)
09.T300KB2100	600 x 600 x 82



Double cover base for FH 150

- Width **per cover base** 300 x 600 mm
- For customised fitting of the cover inserts
- For arrangement, see below

Item no.	Dimensions in mm (WxDxH)
09.T300KB2150	600 x 600 x 132



Single covers 100 mm

- Usable dimension: 270 x 84 x 32 mm
270 x 84 x 82 mm
270 x 84 x 132 mm

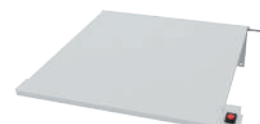
Item no.	Dimensions in mm (WxDxH)
09.T30K10005	300 x 100 x 50
09.T30K10010	300 x 100 x 100
09.T30K10015	300 x 100 x 150



Single covers 200 mm

- Usable dimension: 270 x 184 x 32 mm
270 x 184 x 82 mm
270 x 184 x 132 mm

Item no.	Dimensions in mm (WxDxH)
09.T30K20005	300 x 200 x 50
09.T30K20010	300 x 200 x 100
09.T30K20015	300 x 200 x 150



Single covers 300 mm

- Usable dimension: 270 x 284 x 32 mm
270 x 284 x 82 mm
270 x 284 x 132 mm

Item no.	Dimensions in mm (WxDxH)
09.T30K30005	300 x 300 x 50
09.T30K30010	300 x 300 x 100
09.T30K30015	300 x 300 x 150

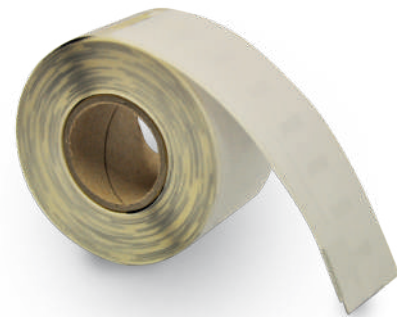
Accessories



Label printer with network connection incl. setup and standard label template

- Printer language ZPL
- Print speed: 127 mm/s
- Print resolution 203 dpi, direct thermal printing
- Weight: 1.4 kg
- With power cable, power pack, USB cable, Windows printer driver

Item no.	Dimensions in mm (WxDxH)
09.ETKD.LAN	171 x 210 x 152



Standard labels

- Paper, white
- Permanently adhesive
- 130 labels per roll

Item no.	Dimensions in mm (WxH)
09.ETK.89.28	89 x 28



Card reader

- The newly developed RFID card readers make it possible to integrate your existing access system.

Item no.
EK-5874



Barcode scanner

- The innovative barcode scanner reads 1D barcodes and 2D-QR codes in a single device including foot

Item no.
EK-5873

Grid:

R 6-24

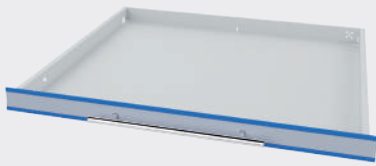
R 12-24

R 18-24

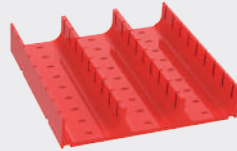
R 24-24

R 36-24

Dividing materials for customised arrangement



Drawer



Trough plate



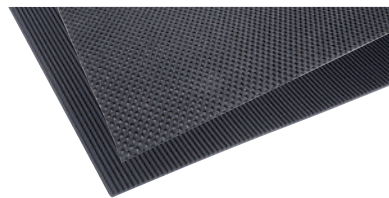
Trough divider



Corrugated rubber mat for top of cabinet

- Oil-proof
- Customised to external housing dimensions

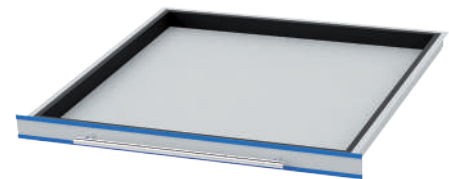
Item no.	Module width
TS-7-60	600



Inserts for drawer

- Customised to internal drawer dimension

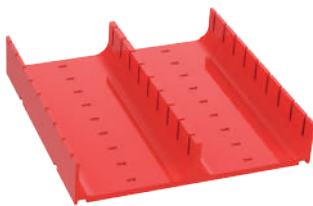
Item no.	Designs
TS-7-80	Non-slip mat
TS-7-70	Corrugated rubber



Spacer bars for drawer width 600

- For balancing and fixing trough plates and small parts boxes in the drawers, VE = 4 pcs.

Item no.	FH	Subdivisions
TS-7-01-D050	50	TP
TS-7-10-D050	50	SPB
TS-7-10-D100	100	SPB



Trough plates

- With 2 troughs 70 mm

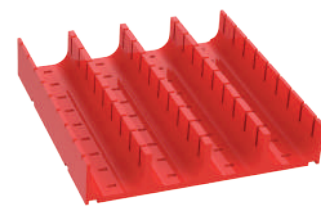
Item no.	Dimensions in mm (WxDxH)
50.002.070	150 x 150 x 30



Trough plates

- With 3 troughs 46 mm

Item no.	Dimensions in mm (WxDxH)
50.003.046	150 x 150 x 30



Trough plates

- With 4 troughs 34 mm

Item no.	Dimensions in mm (WxDxH)
50.004.034	150 x 150 x 30



Trough dividers

- For trough plate with 2 troughs

Item no.	Width in mm
51.002.070	70



Trough dividers

- For trough plate with 3 troughs

Item no.	Width in mm
51.003.046	46

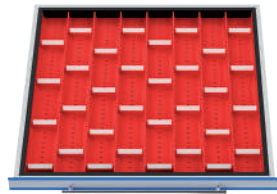


Trough dividers

- For trough plate with 4 troughs

Item no.	Width in mm
51.004.034	34

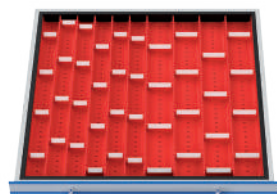
Customisations for internal drawer dimension 600 x 600 mm



Trough plates

- 16 x TP with 2 troughs
- 32 x dividers

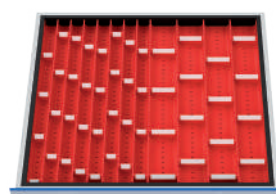
Item no.	FH
TS-7-01	50



Trough plates

- 8 x TP with 2 troughs + 16 x DIV
- 8 x TP with 3 troughs + 24 x DIV

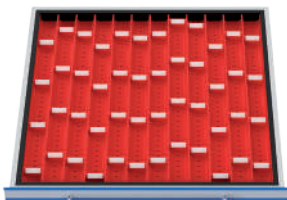
Item no.	FH
TS-7-02	50



Trough plates

- 8 x TP with 2 troughs + 16 x DIV
- 8 x TP with 4 troughs + 32 x DIV

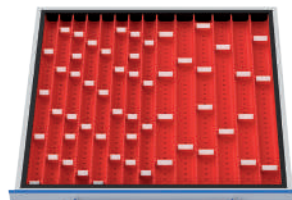
Item no.	FH
TS-7-03	50



Trough plates

- 16 x TP with 3 troughs
- 48 x dividers

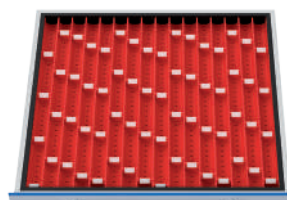
Item no.	FH
TS-7-04	50



Trough plates

- 8 x TP with 3 troughs + 18 x DIV
- 8 x TP with 4 troughs + 36 x DIV

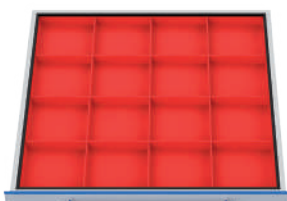
Item no.	FH
TS-7-05	50



Trough plates

- 16 x TP with 4 troughs
- 64 x dividers

Item no.	FH
TS-7-06	50



Plastic small parts boxes

- 16 x SPB 150 x 150 mm

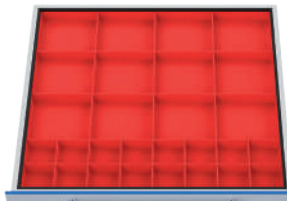
Item no.	FH
TS-7-10-050	50
TS-7-10-100	100



Plastic small parts boxes

- 16 x SPB 75 x 150 mm
- 8 x SPB 150 x 150 mm

Item no.	FH
TS-7-11-050	50
TS-7-11-100	100



Plastic small parts boxes

- 16 x SPB 75 x 75 mm
- 12 x SPB 150 x 150 mm

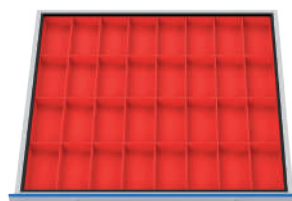
Item no.	FH
TS-7-12-050	50
TS-7-12-100	100



Plastic small parts boxes

- 16 x SPB 75 x 75 mm
- 8 x SPB 75 x 150 mm
- 8 x SPB 150 x 150 mm

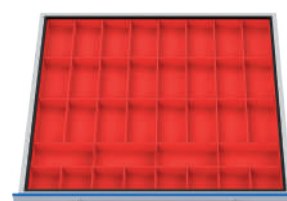
Item no.	FH
TS-7-13-050	50
TS-7-13-100	100



Plastic small parts boxes

- 32 x SPB 75 x 150 mm

Item no.	FH
TS-7-14-050	50
TS-7-14-100	100



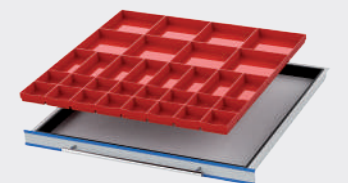
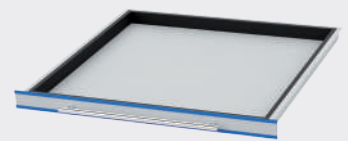
Plastic small parts boxes

- 8 x SPB 75 x 75 mm
- 28 x SPB 75 x 150 mm

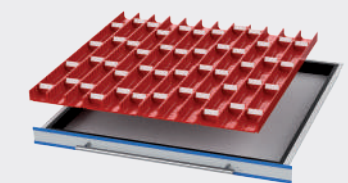
Item no.	FH
TS-7-15-050	50
TS-7-15-100	100

The drawer inserts are made from high-grade plastic and can be inserted into the drawer using the modular principle. The trough plates and small parts boxes can be inserted lengthwise and widthwise.

- Basic dimensions TP: 150 x 150 mm
- Height SPB FH 50: 28 mm
- Height SPB FH 100: 65 mm
- Incl. spacer bars



oder:



Grid:

R 6-24

R 12-24

R 18-24

R 24-24

R 36-24



Drawer



Small parts box



Small parts box

- For front height 50 mm

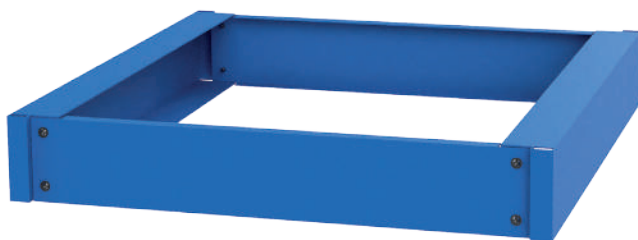
Item no.	Dimensions in mm (WxDxH)
53.075.075.30	75 x 75 x 28
53.150.075.30	75 x 150 x 28
53.150.150.30	150 x 150 x 28



Small parts box

- For front height 65 mm

Item no.	Dimensions in mm (WxDxH)
53.075.075.65	75 x 75 x 65
53.150.075.65	75 x 150 x 65
53.150.150.65	150 x 150 x 65



Lift truck plinth for TSM® 600

Item no.	Dimensions in mm (WxDxH)
09.SOC700	700 x 725 x 112

Metal dividers

- Scope of delivery without drawers
- For internal drawer dimension 600 x 600 mm
- Complete sets for inserting into the drawers
- Metal dividers consisting of side and centre compartment rails as well as divider plates
- The compartment rails are made from high-grade, galvanised sheet metal, the divider plates from aluminium
- Various compartment sizes from a front height of 75 mm
- The individual parts needed for a customised layout of the drawers are listed on page 58



■ 4 compartments 300 x 300 mm

Item no.	FH
TS-7-20-075	75
TS-7-20-100	100
TS-7-20-150	150
TS-7-20-200	200



■ 6 compartments 300 x 200 mm

Item no.	FH
TS-7-21-075	75
TS-7-21-100	100
TS-7-21-150	150
TS-7-21-200	200



■ 8 compartments 300 x 150 mm

Item no.	FH
TS-7-22-075	75
TS-7-22-100	100
TS-7-22-150	150
TS-7-22-200	200



■ 2 compartments 300 x 100 mm
■ 8 compartments 300 x 125 mm

Item no.	FH
TS-7-23-075	75
TS-7-23-100	100
TS-7-23-150	150
TS-7-23-200	200



■ 12 compartments 300 x 100 mm

Item no.	FH
TS-7-24-075	75
TS-7-24-100	100
TS-7-24-150	150
TS-7-24-200	200



■ 12 compartments 300 x 75 mm
■ 2 compartments 300 x 150 mm

Item no.	FH
TS-7-29-075	75
TS-7-29-100	100
TS-7-29-150	150
TS-7-29-200	200



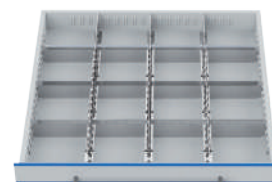
■ 16 compartments 300 x 75 mm

Item no.	FH
TS-7-30-075	75
TS-7-30-100	100
TS-7-30-150	150
TS-7-30-200	200



■ 8 compartments 150 x 300 mm

Item no.	FH
TS-7-31-075	75
TS-7-31-100	100
TS-7-31-150	150
TS-7-31-200	200



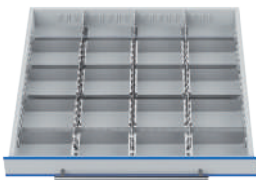
■ 16 compartments 150 x 150 mm

Item no.	FH
TS-7-26-075	75
TS-7-26-100	100
TS-7-26-150	150
TS-7-26-200	200



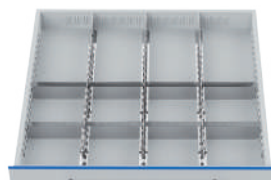
■ 32 compartments 150 x 75 mm

Item no.	FH
TS-7-27-075	75
TS-7-27-100	100
TS-7-27-150	150
TS-7-27-200	200



■ 4 compartments 150 x 100 mm
■ 16 compartments 150x125 mm

Item no.	FH
TS-7-25-075	75
TS-7-25-100	100
TS-7-25-150	150
TS-7-25-200	200



■ 8 compartments 150 x 150 mm
■ 4 compartments 150 x 300 mm

Item no.	FH
TS-7-32-075	75
TS-7-32-100	100
TS-7-32-150	150
TS-7-32-200	200



■ 24 compartments 150 x 100 mm

Item no.	FH
TS-7-35-075	75
TS-7-35-100	100
TS-7-35-150	150
TS-7-35-200	200



■ 24 compartments 150 x 75 mm
■ 4 compartments 150 x 150 mm

Item no.	FH
TS-7-36-075	75
TS-7-36-100	100
TS-7-36-150	150
TS-7-36-200	200

Grid:

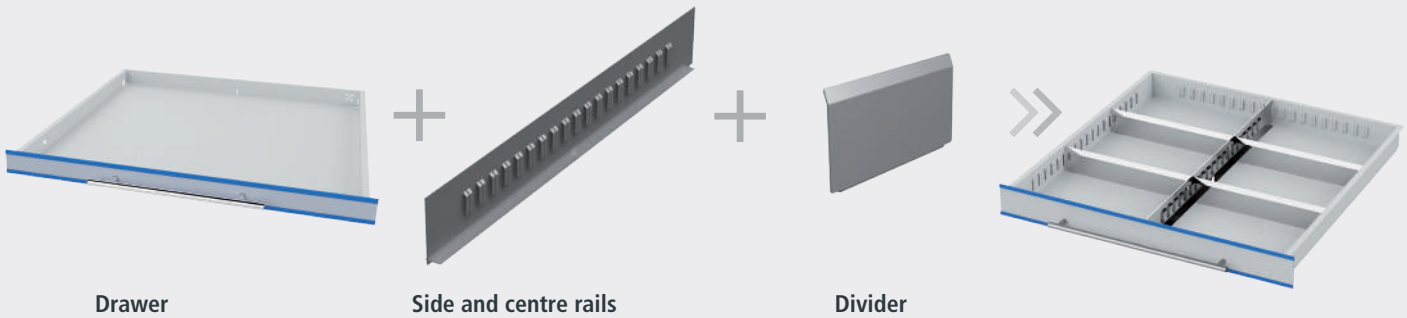
R 6-24

R 12-24

R 18-24

R 24-24

R 36-24

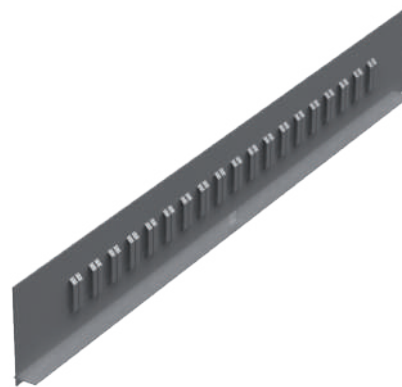


Drawer

Side and centre rails

Divider

Side and centre rails



Side compartment rail for drawer width and drawer depth

- Made from high-quality galvanised sheet metal
- The side compartment rails are hung inside the drawer body
- Supplied in pairs

Item no.	Drawer depth in mm	Front height in mm
TS-7-S075	600	75
TS-7-S100	600	100
TS-7-S150	600	150
TS-7-S200	600	200

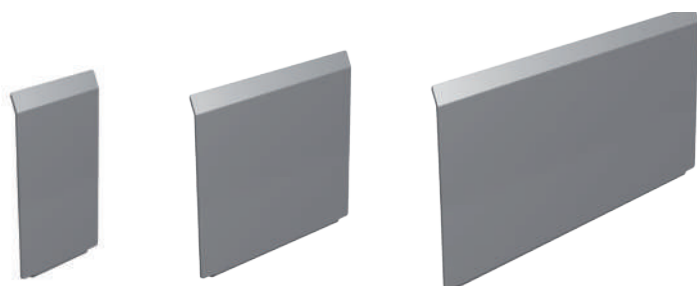
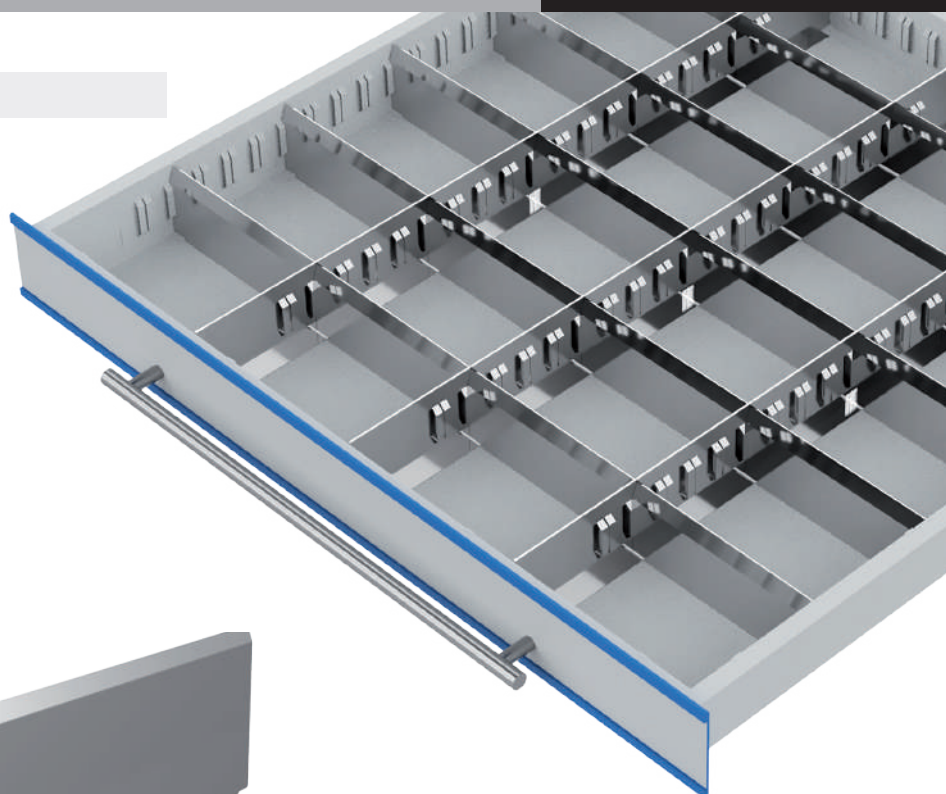
Centre compartment rails

- For lengthwise subdivision of the drawers
- Made from high-quality galvanised sheet metal

Item no.	Drawer depth in mm	Front height in mm
TS-7-M075	600	75
TS-7-M100	600	100
TS-7-M150	600	150
TS-7-M200	600	200

Dividers

- For lateral division of the drawers
- Made from aluminium
- The lightweight metal dividers can be pushed into the slots on the side and centre rails and labelled



Item no.	Divider width in mm	Front height in mm
TS-30050075	50	75
TS-30075075	75	75
TS-30100075	100	75
TS-30125075	125	75
TS-30150075	150	75
TS-30175075	175	75
TS-30200075	200	75
TS-30225075	225	75
TS-30250075	250	75
TS-30275075	275	75
TS-30300075	300	75

Item no.	Divider width in mm	Front height in mm
TS-30050100	50	100
TS-30075100	75	100
TS-30100100	100	100
TS-30125100	125	100
TS-30150100	150	100
TS-30175100	175	100
TS-30200100	200	100
TS-30225100	225	100
TS-30250100	250	100
TS-30275100	275	100
TS-30300100	300	100

Item no.	Divider width in mm	Front height in mm
TS-30050150	50	150
TS-30075150	75	150
TS-30100150	100	150
TS-30125150	125	150
TS-30150150	150	150
TS-30175150	175	150
TS-30200150	200	150
TS-30225150	225	150
TS-30250150	250	150
TS-30275150	275	150
TS-30300150	300	150

Item no.	Divider width in mm	Front height in mm
TS-30050200	50	200
TS-30075200	75	200
TS-30100200	100	200
TS-30125200	125	200
TS-30150200	150	200
TS-30175200	175	200
TS-30200200	200	200
TS-30225200	225	200
TS-30250200	250	200
TS-30275200	275	200
TS-30300200	300	200

Grid:

R 6-24

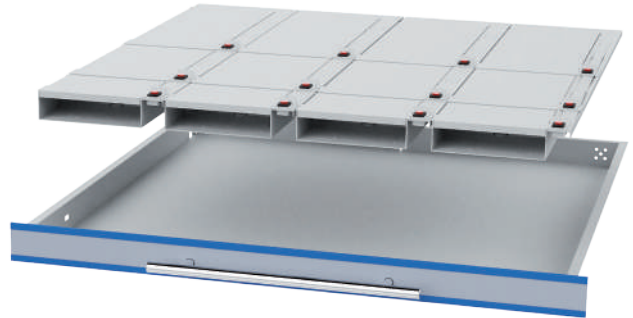
R 12-24

R 18-24

R 24-24

R 36-24

900 x 600 mm (B x T)



- Cabinet housing including lift truck plinth in the housing colour
- Basic module: with touch screen display
- Extension module: without touch screen display
- Drawers with full pull-out
- Housing incl. electronics and control components
- Plus software licence



Basic module

- Empty housing

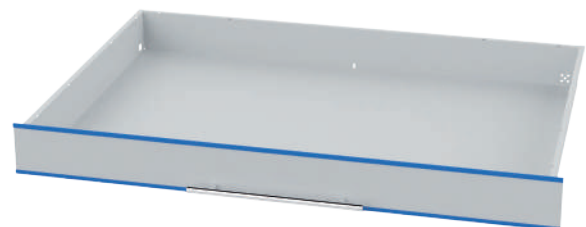
Item no.	Dimensions in mm (WxDxH)
TS5-G1000	1000 x 725 x 1131



Extension module

- Empty housing

Item no.	Dimensions in mm (WxDxH)
TS5-A1000	1000 x 725 x 1131
TS5-A1015	1000 x 725 x 1634

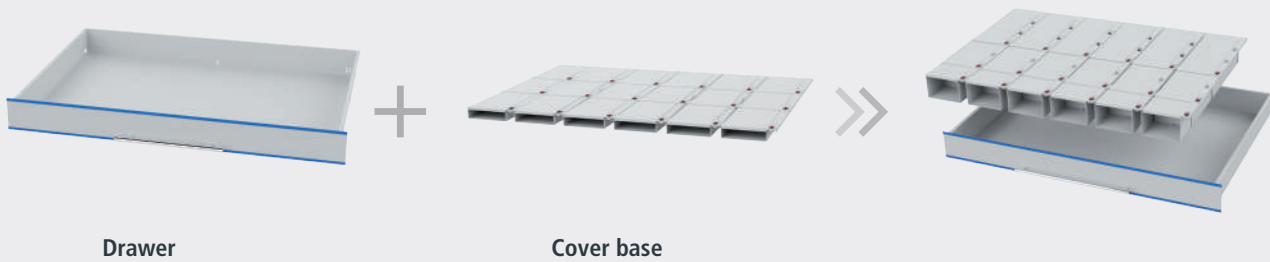


Drawers

- With full pull-out
- Usable area: 600 x 600 mm

Item no.	Width in mm	Front height in mm	Shell height in mm	Load capacity in kg
TSE-00-10-050	900	50	35	60
TSE-00-10-075	900	75	60	100
TSE-00-10-100	900	100	85	100
TSE-00-10-150	900	150	135	100
TSE-00-10-200	900	200	185	100

Cover base

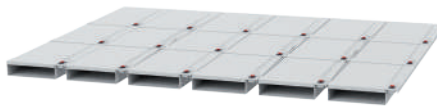


The cover inserts are made from aluminium laser-cut parts and are firmly connected to the drawers. The unlocked drawer and the compartments are shown on the monitor and on the display in the housing. After the product has been removed or replaced and the drawer pushed back into the housing, the compartment is automatically locked again.

You can also arrange the cover inserts yourself. To do this, please use the module on the next page.

Drawer width 900 mm

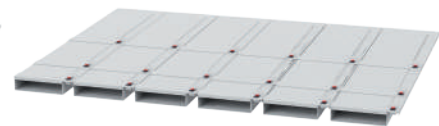
- Software-controlled for internal drawer dimension 600 x 600 mm



Cover sizes:

- 6 x 3 x 200 mm each

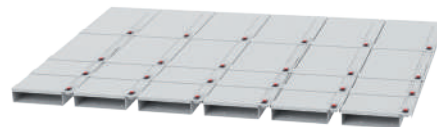
Item no.	FH	Anzahl
TS-10K180-050	50	18
TS-10K180-100	100	18
TS-10K180-150	150	18



Cover sizes:

- 6 x 1 x 100 mm, 1 x 200 mm, 1 x 300 mm each

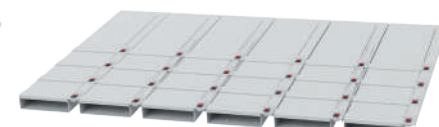
Item no.	FH	Anzahl
TS-10K181-050	50	18
TS-10K181-100	100	18
TS-10K181-150	150	18



Cover sizes:

- 6 x 2 x 100 mm, 2 x 200 mm each

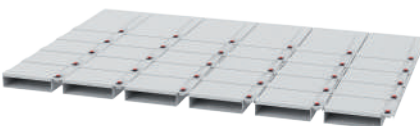
Item no.	FH	Anzahl
TS-10K240-050	50	24
TS-10K240-100	100	24
TS-10K240-150	150	24



Cover sizes:

- 6 x 3 x 100 mm, 1 x 300 mm each

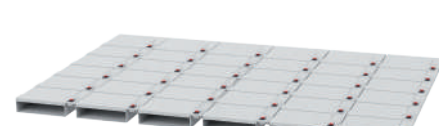
Item no.	FH	Anzahl
TS-10K241-050	50	24
TS-10K241-100	100	24
TS-10K241-150	150	24



Cover sizes:

- 6 x 4 x 100 mm, 1 x 200 mm each

Item no.	FH	Anzahl
TS-10K300-050	50	30
TS-10K300-100	100	30
TS-10K300-150	150	30



Cover sizes:

- 6 x 6 x 100 mm each

Item no.	FH	Anzahl
TS-10K360-050	50	36
TS-10K360-100	100	36
TS-10K360-150	150	36



Cover base



Cover base for FH 50

- 4 x cover bases 150 x 600 mm
- For customised fitting of the cover inserts
- For arrangement, see below

Item no.	Dimensions in mm (WxDxH)
TS-10-KB050	900 x 600 x 32

Cover base for FH 100

- 4 x cover bases 150 x 600 mm
- For customised fitting of the cover inserts
- For arrangement, see below

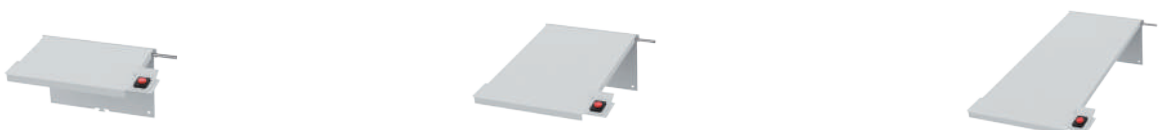
Item no.	Dimensions in mm (WxDxH)
TS-10-KB100	900 x 600 x 82

Cover base for FH 150

- 4 x cover bases 150 x 600 mm
- For customised fitting of the cover inserts
- For arrangement, see below

Item no.	Dimensions in mm (WxDxH)
TS-10-KB150	900 x 600 x 132

Covers



Single covers 100 mm

- Usable dimension: 120 x 84 x 32 mm
120 x 84 x 82 mm
120 x 84 x 132 mm

Item no.	Dimensions in mm (WxDxH)
09.T15K10005	150 x 100 x 50
09.T15K10010	150 x 100 x 100
09.T15K10015	150 x 100 x 150

Single covers 200 mm

- Usable dimension: 120 x 184 x 32 mm
120 x 184 x 82 mm
120 x 184 x 132 mm

Item no.	Dimensions in mm (WxDxH)
09.T15K20005	150 x 200 x 50
09.T15K20010	150 x 200 x 100
09.T15K20015	150 x 200 x 150

Single covers 300 mm

- Usable dimension: 120 x 284 x 32 mm
120 x 284 x 82 mm
120 x 284 x 132 mm

Item no.	Dimensions in mm (WxDxH)
09.T15K30005	150 x 300 x 50
09.T15K30010	150 x 300 x 100
09.T15K30015	150 x 300 x 150

Grid:

R 6-24

R 12-24

R 18-24

R 24-24

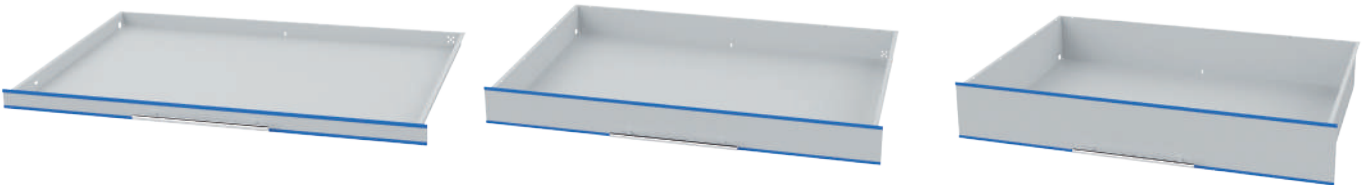
R 36-24



Drawer

Triple Cover base

Covers



Drawer FH 50 mm

- Usable dimension 900 x 600 x 35 mm
- Load capacity 60 Kg

Item no.	Dimensions in mm (WxDxH)
TSE-00-10-050	600 x 600 x 50

Drawer FH 100 mm

- Usable dimension 900 x 600 x 85 mm
- Load capacity 100 Kg

Item no.	Dimensions in mm (WxDxH)
TSE-00-10-100	600 x 600 x 100

Drawer FH 150 mm

- Usable dimension 900 x 600 x 135 mm
- Load capacity 100 Kg

Item no.	Dimensions in mm (WxDxH)
TSE-00-10-150	600 x 600 x 150



Triple cover base for FH 50

- Width per cover base 300 x 600 mm
- For customised fitting of the cover inserts
- For arrangement, see below

Item no.	Dimensions in mm (WxDxH)
09.T300KB3050	900 x 600 x 32

Triple Cover base for FH 100

- Width per cover base 300 x 600 mm
- For customised fitting of the cover inserts
- For arrangement, see below

Item no.	Dimensions in mm (WxDxH)
09.T300KB3100	900 x 600 x 82

Triple Cover base for FH 150

- Width per cover base 300 x 600 mm
- For customised fitting of the cover inserts
- For arrangement, see below

Item no.	Dimensions in mm (WxDxH)
09.T300KB3150	900 x 600 x 132



Single covers 100 mm

- Usable dimension: 270 x 84 x 32 mm
270 x 84 x 82 mm
270 x 84 x 132 mm

Item no.	Dimensions in mm (WxDxH)
09.T30K10005	300 x 100 x 50
09.T30K10010	300 x 100 x 100
09.T30K10015	300 x 100 x 150



Single covers 200 mm

- Usable dimension: 270 x 184 x 32 mm
270 x 184 x 82 mm
270 x 184 x 132 mm

Item no.	Dimensions in mm (WxDxH)
09.T30K20005	300 x 200 x 50
09.T30K20010	300 x 200 x 100
09.T30K20015	300 x 200 x 150



Single covers 300 mm

- Usable dimension: 270 x 284 x 32 mm
270 x 284 x 82 mm
270 x 284 x 132 mm

Item no.	Dimensions in mm (WxDxH)
09.T30K30005	300 x 300 x 50
09.T30K30010	300 x 300 x 100
09.T30K30015	300 x 300 x 150

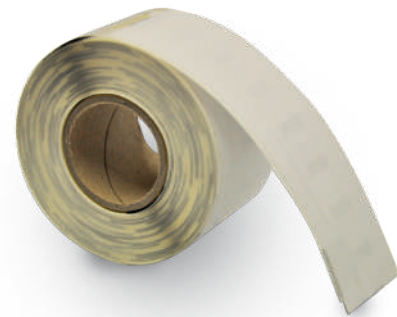
Accessories



Label printer with network connection incl. setup and standard label template

- Printer language ZPL
- Print speed: 127 mm/s
- Print resolution 203 dpi, direct thermal printing
- Weight: 1.4 kg
- With power cable, power pack, USB cable, Windows printer driver

Item no.	Dimensions in mm (WxDxH)
09.ETKD.LAN	171 x 210 x 152



Standard labels

- Paper, white
- Permanently adhesive
- 130 labels per roll

Item no.	Dimensions in mm (WxH)
09.ETK.89.28	89 x 28



Card reader

- The newly developed RFID card readers make it possible to integrate your existing access system.

Item no.
EK-5874



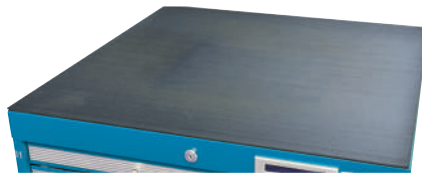
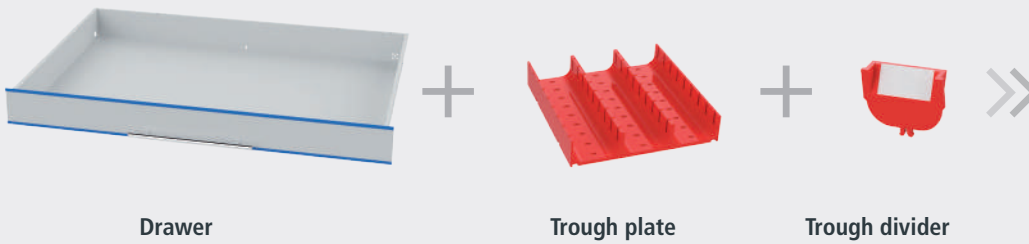
Barcode scanner

- The innovative barcode scanner reads 1D barcodes and 2D-QR codes in a single device including foot

Item no.
EK-5873

Grid: R 6-24 R 12-24 R 18-24 R 24-24 R 36-24

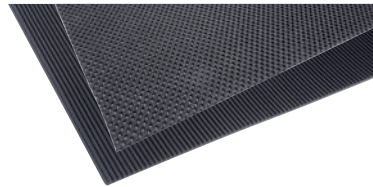
Dividing materials for customised arrangement



Corrugated rubber mat for top of cabinet

- Oil-proof
- Customised to external housing dimensions

Item no.	Module width
TS-10-60	1000



Inserts for drawer

- Customised to internal drawer dimension
- 900 x 600 mm (B x T)

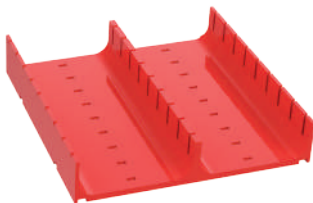
Item no.	Designs
TS-10-80	Non-slip mat
TS-10-70	Corrugated rubber



Spacer bars for drawer width 900

- For balancing and fixing trough plates and small parts boxes in the drawers, VE = 4 pcs.

Item no.	FH	Subdivisions
TS-10-01-D050	50	TP
TS-10-10-D050	50	SPB
TS-10-10-D100	100	SPB



Trough platen

- With 2 troughs 70 mm

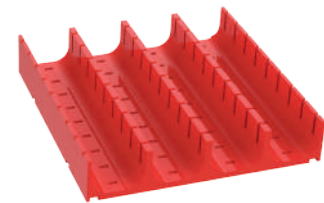
Item no.	Dimensions in mm (WxDxH)
50.002.070	150 x 150 x 30



Trough platen

- With 3 troughs 46 mm

Item no.	Dimensions in mm (WxDxH)
50.003.046	150 x 150 x 30



Trough platen

- With 4 troughs 34 mm

Item no.	Dimensions in mm (WxDxH)
50.004.034	150 x 150 x 30



Trough dividers

- For trough plate with 2 troughs

Item no.	Width in mm
51.002.070	70



Trough dividers

- For trough plate with 3 troughs

Item no.	Width in mm
51.003.046	46



Trough dividers

- For trough plate with 4 troughs

Item no.	Width in mm
51.004.034	34

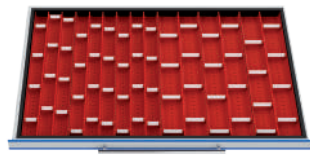
Customisations for internal drawer dimension 900 x 600 mm



Trough platen

- 24 x TP with 2 troughs + 48 x DIV

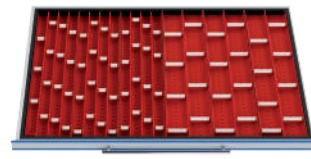
Item no.	FH
TS-10-01	50



Trough platen

- 12 x TP with 2 troughs + 24 x DIV
- 12 x TP with 3 troughs + 36 x DIV

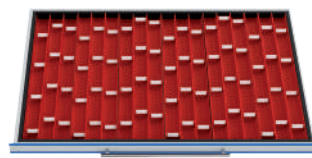
Item no.	FH
TS-10-02	50



Trough platen

- 12 x TP with 2 troughs + 24 x DIV
- 12 x TP with 4 troughs + 48 x DIV

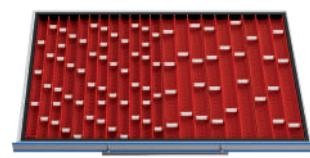
Item no.	FH
TS-10-03	50



Trough platen

- 24 x TP with 3 troughs + 60 x DIV

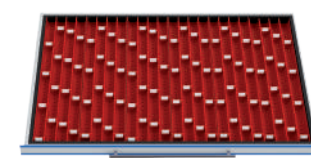
Item no.	FH
TS-10-04	50



Trough platen

- 12 x TP with 3 troughs + 27 x DIV
- 12 x TP with 4 troughs + 54 x DIV

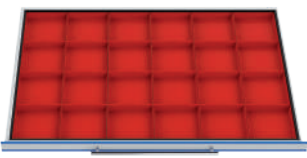
Item no.	FH
TS-10-05	50



Trough platen

- 24 x TP with 4 troughs + 96 x DIV

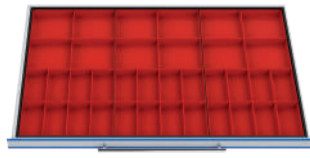
Item no.	FH
TS-10-06	50



Plastic small parts boxes

- 24 x SPB 150 x 150 mm

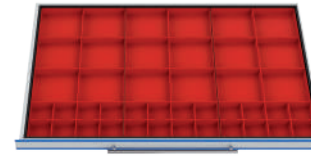
Item no.	FH
TS-10-10-050	50
TS-10-10-100	100



Plastic small parts boxes

- 24 x SPB 75 x 150 mm
- 12 x SPB 150 x 150 mm

Item no.	FH
TS-10-11-050	50
TS-10-11-100	100



Plastic small parts boxes

- 24 x SPB 75 x 75 mm
- 18 x SPB 150 x 150 mm

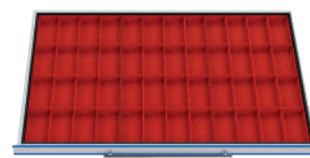
Item no.	FH
TS-10-12-050	50
TS-10-12-100	100



Plastic small parts boxes

- 24 x SPB 75 x 75 mm
- 12 x SPB 75 x 150 mm
- 12 x SPB 150 x 150 mm

Item no.	FH
TS-10-13-050	50
TS-10-13-100	100



Plastic small parts boxes

- 48 x SPB 75 x 150 mm

Item no.	FH
TS-10-14-050	50
TS-10-14-100	100



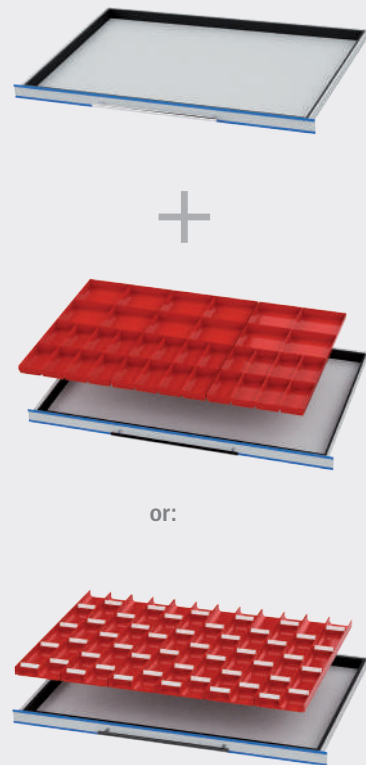
Plastic small parts boxes

- 12 x SPB 75 x 75 mm
- 42 x SPB 75 x 150 mm

Item no.	FH
TS-10-15-050	50
TS-10-15-100	100

The drawer inserts are made from high-grade plastic and can be inserted into the drawer using the modular principle. The trough plates and small parts boxes can be inserted lengthwise and widthwise.

- Basic dimensions TP: 150 x 150 mm
- Height SPB FH 50: 28 mm
- Height SPB FH 100: 65 mm
- Incl. spacer bars



Grid:

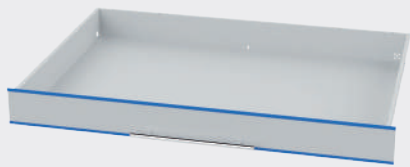
R 6-24

R 12-24

R 18-24

R 24-24

R 36-24



Drawer



Small parts box



Small parts box

- For front height 50 mm

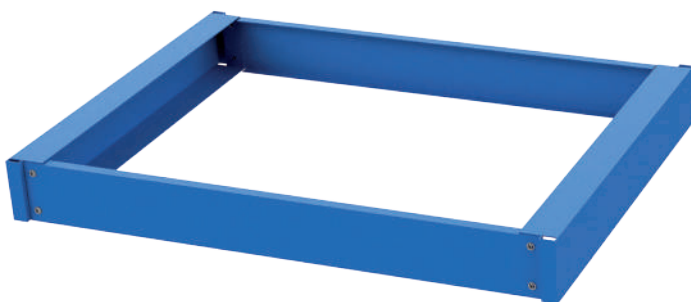
Item no.	Dimensions in mm (WxDxH)
53.075.075.30	75 x 75 x 28
53.150.075.30	75 x 150 x 28
53.150.150.30	150 x 150 x 28



Small parts box

- For front height 100 mm

Item no.	Dimensions in mm (WxDxH)
53.075.075.65	75 x 75 x 65
53.150.075.65	75 x 150 x 65
53.150.150.65	150 x 150 x 65



Lift truck plinth for TSM® 600

Item no.	Dimensions in mm (WxDxH)
09.SOC1000	1000 x 725 x 112

Metal dividers

- Scope of delivery without drawers
- For internal drawer dimension 600 x 600 mm
- Complete sets for inserting into the drawers
- Metal dividers consisting of side and centre compartment rails as well as divider plates
- The compartment rails are made from high-grade, galvanised sheet metal, the divider plates from aluminium
- Various compartment sizes from a front height of 75 mm
- The individual parts needed for a customised layout of the drawers are listed on page 70



■ 6 compartments 300 x 300 mm

Item no.	FH
TS-10-20-075	75
TS-10-20-100	100
TS-10-20-150	150
TS-10-20-200	200



■ 9 compartments 300 x 200 mm

Item no.	FH
TS-10-21-075	75
TS-10-21-100	100
TS-10-21-150	150
TS-10-21-200	200



■ 12 compartments 300 x 150 mm

Item no.	FH
TS-10-22-075	75
TS-10-22-100	100
TS-10-22-150	150
TS-10-22-200	200



■ 3 compartments 300 x 100 mm
■ 12 compartments 300 x 125 mm

Item no.	FH
TS-10-23-075	75
TS-10-23-100	100
TS-10-23-150	150
TS-10-23-200	200



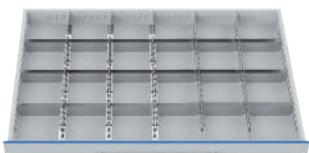
■ 18 compartments 300 x 100 mm

Item no.	FH
TS-10-24-075	75
TS-10-24-100	100
TS-10-24-150	150
TS-10-24-200	200



■ 6 compartments 150 x 100 mm
■ 24 compartments 150 x 125 mm

Item no.	FH
TS-10-25-075	75
TS-10-25-100	100
TS-10-25-150	150
TS-10-25-200	200



■ 24 compartments 150 x 50 mm

Item no.	FH
TS-10-26-075	75
TS-10-26-100	100
TS-10-26-150	150
TS-10-26-200	200



■ 42 compartments 150 x 75 mm

Item no.	FH
TS-10-27-075	75
TS-10-27-100	100
TS-10-27-150	150
TS-10-27-200	200



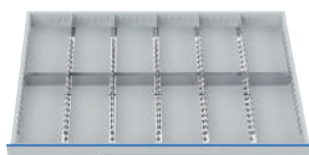
■ 18 compartments 300 x 75 mm
■ 3 x compartments 300 x 150 mm

Item no.	FH
TS-10-29-075	75
TS-10-29-100	100
TS-10-29-150	150
TS-10-29-200	200



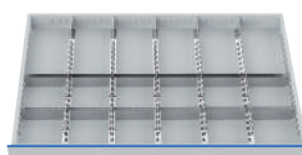
■ 24 compartments 300 x 75 mm

Item no.	FH
TS-10-30-075	75
TS-10-30-100	100
TS-10-30-150	150
TS-10-30-200	200



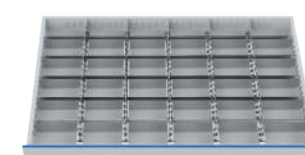
■ 12 compartments 150 x 300 mm

Item no.	FH
TS-10-31-075	75
TS-10-31-100	100
TS-10-31-150	150
TS-10-31-200	200



■ 12 compartments 150 x 150 mm
■ 6 compartments 150 x 300 mm

Item no.	FH
TS-10-32-075	75
TS-10-32-100	100
TS-10-32-150	150
TS-10-32-200	200



■ 36 compartments 150 x 100 mm

Item no.	FH
TS-10-35-075	75
TS-10-35-100	100
TS-10-35-150	150
TS-10-35-200	200



■ 36 compartments 150 x 75 mm
■ 6 compartments 150 x 150 mm

Item no.	FH
TS-10-36-075	75
TS-10-36-100	100
TS-10-36-150	150
TS-10-36-200	200

Grid:

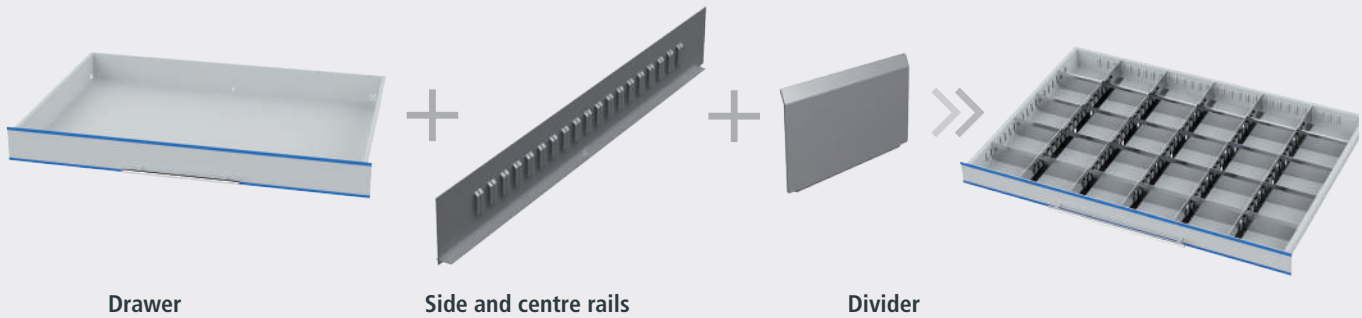
R 6-24

R 12-24

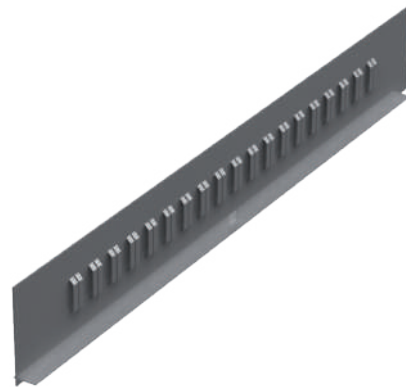
R 18-24

R 24-24

R 36-24



Side and centre rails



Side compartment rail for drawer width and drawer depth

- Made from high-quality galvanised sheet metal
- The side compartment rails are hung inside the drawer body
- Supplied in pairs

Item no.	Drawer depth in mm	Front height in mm
TS-10-S075	900	75
TS-10-S100	900	100
TS-10-S150	900	150
TS-10-S200	900	200

Centre compartment rails

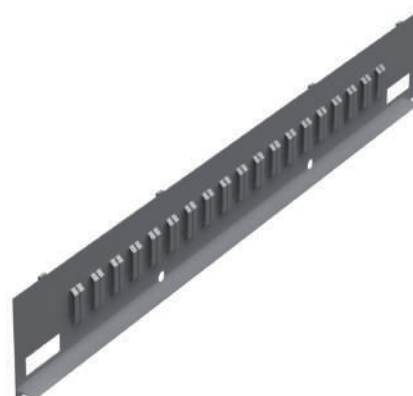
- For lengthwise subdivision of the drawers
- Made from high-quality galvanised sheet metal

Item no.	Front height in mm
TS-7-M075	75
TS-7-M100	100
TS-7-M150	150
TS-7-M200	200

Side compartment rail for drawer width and drawer depth

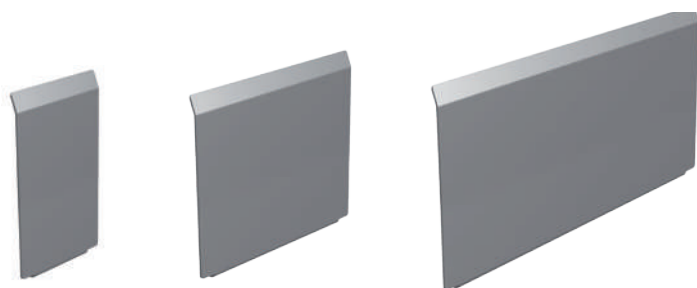
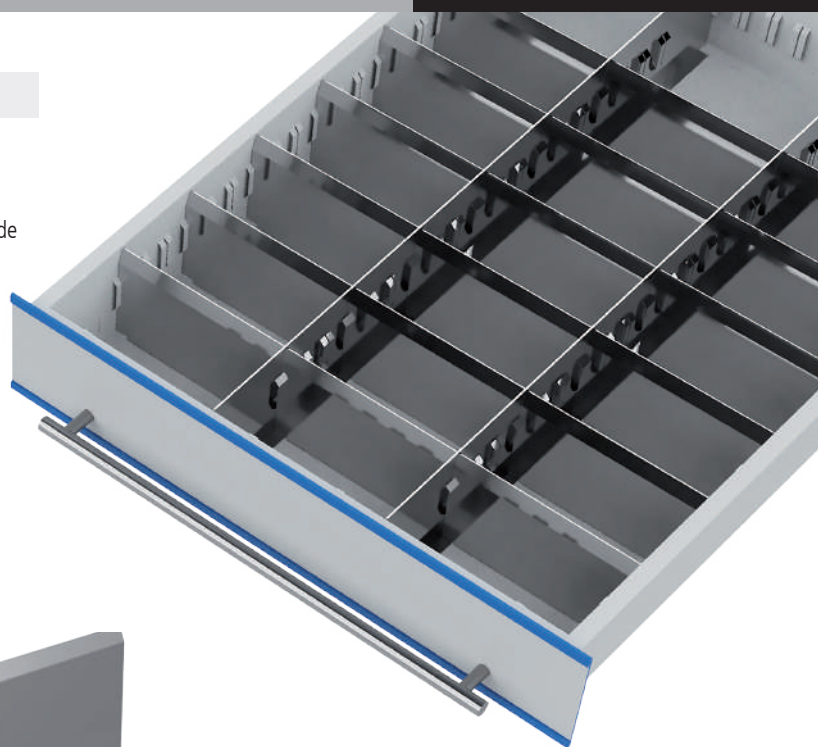
- Made from high-quality galvanised sheet metal
- The side compartment rails are hung inside the drawer body
- Supplied in pairs Longitudinal distribution

Item no.	Drawer depth in mm	Front height in mm
TS-7-S075	600	75
TS-7-S100	600	100
TS-7-S150	600	150
TS-7-S200	600	200



Dividers

- For lateral division of the drawers
- Made from aluminium
- The lightweight metal dividers can be pushed into the slots on the side and centre rails and labelled



Item no.	Divider width in mm	Front height in mm
TS-30050075	50	75
TS-30075075	75	75
TS-30100075	100	75
TS-30125075	125	75
TS-30150075	150	75
TS-30175075	175	75
TS-30200075	200	75
TS-30225075	225	75
TS-30250075	250	75
TS-30275075	275	75
TS-30300075	300	75

Item no.	Divider width in mm	Front height in mm
TS-30050100	50	100
TS-30075100	75	100
TS-30100100	100	100
TS-30125100	125	100
TS-30150100	150	100
TS-30175100	175	100
TS-30200100	200	100
TS-30225100	225	100
TS-30250100	250	100
TS-30275100	275	100
TS-30300100	300	100

Item no.	Divider width in mm	Front height in mm
TS-30050150	50	150
TS-30075150	75	150
TS-30100150	100	150
TS-30125150	125	150
TS-30150150	150	150
TS-30175150	175	150
TS-30200150	200	150
TS-30225150	225	150
TS-30250150	250	150
TS-30275150	275	150
TS-30300150	300	150

Item no.	Divider width in mm	Front height in mm
TS-30050200	50	200
TS-30075200	75	200
TS-30100200	100	200
TS-30125200	125	200
TS-30150200	150	200
TS-30175200	175	200
TS-30200200	200	200
TS-30225200	225	200
TS-30250200	250	200
TS-30275200	275	200
TS-30300200	300	200

Complete solutions

- Drawer cabinets including storage & administration software
- Basic module: with touch screen display
- Extension module: without touch screen display
- Offers complete with drawers
- Full pull-out
- For individually controllable cover divisions, see pages 40 and 50



- 6 drawers:
2 x 100, 2 x 150, 2 x 200 mm

Item no.	Module	External dimensions (WxDxH) in mm
TS5G00500060	Basic	550 x 725 x 1019
TS5A00500060	Extension	550 x 725 x 1019
TS5G00700060	Basic	700 x 725 x 1019
TS5A00700060	Extension	700 x 725 x 1019



- 6 drawers:
1 x 100, 4 x 150, 1 x 200 mm

Item no.	Module	External dimensions (WxDxH) in mm
TS5G00500061	Basic	550 x 725 x 1019
TS5A00500061	Extension	550 x 725 x 1019
TS5G00700061	Basic	700 x 725 x 1019
TS5A00700061	Extension	700 x 725 x 1019



- 7 drawers:
2 x 50, 1 x 100, 2 x 150, 2 x 200 mm

Item no.	Module	External dimensions (WxDxH) in mm
TS5G00500070	Basic	550 x 725 x 1019
TS5A00500070	Extension	550 x 725 x 1019
TS5G00700070	Basic	700 x 725 x 1019
TS5A00700070	Extension	700 x 725 x 1019



- 7 drawers:
1 x 50, 2 x 100, 3 x 150, 1 x 200 mm

Item no.	Module	External dimensions (WxDxH) in mm
TS5G00500071	Basic	550 x 725 x 1019
TS5A00500071	Extension	550 x 725 x 1019
TS5G00700071	Basic	700 x 725 x 1019
TS5A00700071	Extension	700 x 725 x 1019



- 8 drawers:
2 x 50, 3 x 100, 2 x 150, 1 x 200 mm

Item no.	Module	External dimensions (WxDxH) in mm
TS5G00500080	Basic	550 x 725 x 1019
TS5A00500080	Extension	550 x 725 x 1019
TS5G00700080	Basic	700 x 725 x 1019
TS5A00700080	Extension	700 x 725 x 1019



- 9 drawers:
9 x 100 mm

Item no.	Module	External dimensions (WxDxH) in mm
TS5G00500090	Basic	550 x 725 x 1019
TS5A00500090	Extension	550 x 725 x 1019
TS5G00700090	Basic	700 x 725 x 1019
TS5A00700090	Extension	700 x 725 x 1019

- Controlled via **storage & administration software**
- TSS® modules linkage variants
- Drawers with full pull-out
- Incl. software licence
- **All modules including lift truck plinth in the housing colours**



- 1x basic module TSM® 450/600
- 1x extension module TSM® 450/600
- Controlled via storage & administration software
- Drawer arrangement per 5-module TSS®:
1x 50, 2x 100, 3x 150, 1x 200 mm

Item no.	Module width in mm
TS5-GA500-1	550
TS5-GA700-1	700



- 1x basic module TSM® 450/600
- 1x extension module TSM® 450/600
- Controlled via storage & administration software
- Drawer arrangement per 5-module TSS®:
18 x 50 mm

Item no.	Module width in mm
TS5-GA500-2	550
TS5-GA700-2	700



- 1x basic module TSM® 450/600
- 2x extension module TSM® 450/600
- Controlled via storage & administration software
- Drawer arrangement per 5-module TSS®:
1x 50, 2x 100, 3x 150, 1x 200 mm

Item no.	Module width in mm
TS5-GA500-3	550
TS5-GA700-3	700



- 1x basic module TSM® 450/600
- 3x extension module TSM® 450/600
- Controlled via storage & administration software
- Drawer arrangement per 5-module TSS®:
1x 50, 2x 100, 3x 150, 1x 200 mm

Item no.	Module width in mm
TS5-GA500-4	550
TS5-GA700-4	700

Linkage variants

TSM® combinations

- Controlled via **storage & administration software**
- TSS® modules linkage variants with TSM® modules
- Drawers with full pull-out
- **All modules including lift truck plinth in the housing colours**



- 1x basic module TSM® 600
- 1x extension module TSM® 600
- 2x extension module TSM® 300
- Controlled via storage & administration software
- Drawer arrangement per 5-module TSS®: 4x 100, 2x 150, 1x 200 mm
- Drawer arrangement per module: 1x 50, 9x 100, 5x 150 mm

Item no.

TS5-TSM-01



- 1x basic module TSM® 150
- 2x extension module TSM® 150
- 2x extension module TSM® 600
- Controlled via storage & administration software
- Drawer arrangement per TSM® module: 8x 50, 7x 100, 4x 150 mm
- Drawer arrangement per module: 1x 50, 2x 100, 3x 150, 1x 200 mm

Item no.

TS5-TSM-02



- 1x basic module TSM® 300
- 1x extension module TSM® 150
- 2x extension module TSM® 600
- Controlled via storage & administration software
- Drawer arrangement per TSM® module: 5x 50, 10x 100, 3x 150 mm
- Drawer arrangement per module: 6x 50, 3x 100, 2x 150 mm

Item no.

TS5-TSM-03



- 1x basic module TSM® 600
- 1x extension module TSM® 600
- 3x extension module TSM® 150
- Controlled via storage & administration software
- Drawer arrangement per 5-module TSS®: 18 x 50 mm
- Drawer arrangement per module: 34 x 50 mm

Item no.

TS5-TSM-04

- A modular, combinable and expandable system like no other
- The TSS® series is unrivalled in terms of its flexibility, functionality, efficient use of space and also offers countless variation possibilities
- This new generation of drawer cabinets offers various types of locking mechanism



+



» TSS®1

Mechanical locking with key and cylinder lock

- Individual locking, all locking or with main locking system
- All drawers are unlocked simultaneously, although only one drawer can be opened at a time to prevent the cabinet from tipping over

+



» TSS®2

Electromechanically by wireless technology with rotary knob and transponder technology

- Contactless opening or locking of the cabinets at the press of a button by means of wireless transmission
- All drawers are unlocked simultaneously, although here as well, only one drawer can be opened at a time
- Freely programmable
- Simple modification or retrofitting
- Battery operation means no mains connection is necessary
- Low battery warning
- Wireless radius of up to 30 cm
- Optionally also with software and individually assigned access restrictions
- Battery life: 1,000,000 operations
- Up to 48,000 locking actions

+



» TSS®3

Storage administration software

- For the storage administration of non-electronic tool cabinets
- Software functions such as TSM®-Software incl. minimum stock monitoring without the control of an electronic dispensing system
- 15" touch monitor, PC with Windows Embedded 64 bit Industry Pro and software pack
- PC housing for mounting on a tool cabinet

+



» TSS®4

External control through connection to third-party software

- The Tool-Server-System can be connected to existing administration programs through an interface
- Modules, drawers and cover dividers can also be allocated to individual operators here

GENERAL CONDITIONS OF PAYMENT AND DELIVERY OF BEDRUNKA & HIRTH GMBH BRÄUNLINGEN

1. Scope of validity

1.1 The following terms and conditions are applicable to all our offers, sales, deliveries and services and shall form part of the contract unless a separate contractual agreement is concluded in writing. They shall not apply if our contract partner is a private individual and does not act in a professional or commercial capacity. They shall also apply to all future business relationships, even if they are not expressly agreed as being applicable to future orders.

1.2 We hereby expressly reject any and all deviating or supplemental General Terms and Conditions of the Buyer. These shall also not apply if the Buyer has based his order or other declaration upon them or has rejected the applicability of our General Terms and Conditions.

2. Offers and conclusion of contract

2.1 Our offers are non-binding and may therefore be revoked by us prior to delivery for acceptance by the customer and for 2 working days thereafter, unless they have been described as binding in writing. An effective contract therefore comes into existence only through our order confirmation or the despatch of the goods.

2.2 Dimensions, weights, illustrations, drawings and other documents belonging to our non-binding offers shall remain our property and are indicative only. They shall become a binding part of the contract only with our express written confirmation.

3. Doubtful creditworthiness

3.1 If, after concluding the contract, we become aware of circumstances that cause us to have doubts about the Buyer's ability to pay, we may make further deliveries contingent upon the Buyer making advance payment for the goods. We can require the Buyer to make advance payment within an appropriate period and withdraw from the contract if the advance payment is not paid on time; the Buyer can furnish us with collateral in the form of a bank guarantee instead of the advance payment. If we have already delivered the goods, the purchase price shall immediately become due for payment in full, regardless of any agreed payment deadlines.

3.2 Reasons for doubting the Buyer's ability to pay include the initiation of insolvency proceedings over the Buyer's assets or the failure to make payments to us or third parties on time.

4. Prices

4.1 All prices are net, ex works, without packaging, unless agreed otherwise. The prices applicable on the day of delivery shall always apply. In the case of fixed-price arrangements, we are also entitled to bill proportionately for any increase in the price of materials, salary increases and the like. The prevailing rate of statutory VAT shall be added to all prices.

4.2 Unless agreed otherwise in the offer or order confirmation, packaging shall be charged for separately.

4.3 Shipping / transfer of risk

All risks shall transfer to the Buyer upon handover to the haulier and not later than when the goods leave the factory or warehouse. We are at liberty to choose the shipping method.

4.4 Goods reported as available for despatch on the agreed date must be collected without delay, failing which, we are entitled to store the goods at our own discretion at the Buyer's expense and risk and to charge for them as delivered ex works or ex warehouse. The same shall apply if shipping cannot take place due to traffic stoppages or other circumstances beyond our control.

4.5 Statutory value added tax is not included in our prices and the rate applicable on the billing date shall be indicated separately on the invoice.

4.6 If a delivery within the internal market of the EC was treated as tax-free within the scope of the intra-community supply of goods, even though the prerequisites for this were not met, the delivery shall nevertheless be deemed tax-free if the

utilisation of the tax exemption is based on the incorrect information provided by the Buyer and we were unable to identify the incorrect nature of this information, even with the due care of a prudent merchant. In this case, the Buyer shall owe the unpaid tax.

4.7 If more than 4 months pass between the date on which the contract is concluded and the date of delivery, without this being due to a delay in delivery for which Bedrunka + Hirth is responsible, and if our applicable price list has changed during this time, we may demand the list price applicable on the date of delivery instead of the agreed purchase price. We will send the Buyer an appropriately amended order confirmation prior to delivery. In this case, the Buyer may withdraw from its order in respect of the goods for which the price has been increased. The Buyer must declare its intention to withdraw by not later than on the fifth day after receiving the amended order confirmation. This declaration may be sent by fax or email.

5. Delivery time

5.1 All indicated delivery dates are non-binding and are agreed as indicative only, unless we have expressly described them as binding. For non-binding delivery dates, a delivery within 14 days of the indicated delivery date shall in any event still be deemed to be a timely delivery.

5.2 If we are unable to adhere to an expressly agreed deadline or fall behind for other reasons for which we are responsible, the Buyer shall grant us an appropriate grace period. If this grace period expires without success, the Buyer shall be entitled to withdraw from the contract.

5.3 If performance becomes temporarily impossible or considerably more difficult for us, whether in full or in part, due to force majeure or for other extraordinary circumstances beyond our control, the agreed delivery time shall be extended by the duration of the obstacle to performance. The same applies to a deadline for the rendering of service set by the law or by the Buyer, in particular for grace periods set in the event of default.

5.4 Prior to the expiry of the delivery time or the performance deadline extended in accordance with para. 3, the Buyer shall not be entitled to withdraw nor to receive compensation. If the obstacle to performance lasts longer than 3 months, both the Buyer and we shall be entitled to withdraw from the contract if the contract has not yet been executed. If the Buyer is entitled to withdraw from the contract in accordance with the contract or the law (e.g. due to a lack of interest) without setting a grace period, this right shall remain unaffected.

5.5 In the event of a delay in delivery that is not based on intent or gross negligence, claims for compensation of all kinds shall be precluded.

6. Shipping and transport risk

6.1 In principle, risk transfers to the Buyer when the goods are loaded for transport. If the goods are lost or damaged when transported on our vehicles or the vehicles of our contract hauliers and neither we nor the recipient are responsible for such loss or damage, we are nevertheless prepared to cover the loss if the recipient provides a damage report on the delivery note or waybill without delay, indicating the nature and extent of the transport damage found and the reasons for its occurrence, and signed by the haulier by way of confirmation.

6.2 Unless otherwise expressly agreed in writing, we are authorised to make partial deliveries to a reasonable extent.

6.3 We will charge EUR 7.50 for each notification of delivery requested by the customer that is made by telephone, fax or email

7. Terms of payment

7.1 Our invoices are payable within 10 days from the invoice date with a 2% discount or within 30 days in full.

7.2 The Buyer shall be in default, without any warning by ourselves, if it does not pay the purchase price within 30 days of becoming due and receipt of the invoice or an equivalent demand for payment.

7.3 If the Buyer is late making a payment, all of its payment obligations arising from the business relationship with us shall immediately become due. In this case,

we are entitled to demand interest in the legally established amount with effect from the relevant moment. The Vendor reserves the right to provide proof of further damage.

7.4 The Buyer is entitled to set-off, even if complaints or counterclaims are asserted, only if the counterclaims have been legally established, acknowledged by the Vendor or are not in dispute. The Buyer is authorised to exercise its right of retention if its counterclaim is based on the same purchase agreement.

8. Liability

8.1 Information about the properties of goods, as well as references to technical standards in catalogues or other advertising media and our price lists, are for descriptive purposes only and do not form the basis for any guarantee of quality without explicit reference in the order confirmation or in the contract.

8.2 We are not obliged to provide any warranty if the Buyer has not immediately complained about an apparent fault in writing. In the case of hidden faults, which could not be discovered even with careful execution of the obligations of the customer pursuant to Art. 377 German Commercial Code, the complaint shall be raised immediately after the fault has been found. If the product has a fault for which we are responsible and the Buyer complains about it promptly in writing, we will undertake to rectify the fault - to the exclusion of the right of the Buyer to withdraw from the contract or to reduce the purchase price - unless we are entitled to refuse rectification on the basis of a statutory regulation. For each individual fault, the Buyer shall grant us an appropriate period of time in which to effect rectification.

8.3 Rectification can take the form of the elimination of the fault or the delivery of a new product, at the Buyer's option. We are entitled to reject the method of rectification chosen by the Buyer if it is associated with disproportionately high costs. During rectification, a reduction in the purchase price or withdrawal from the contract by the Buyer are precluded. Rectification is deemed to have failed after the second unsuccessful attempt. If rectification has failed or the Vendor has rejected the rectification overall, the Buyer can demand a lowering of the purchase price (reduction) or declare its withdrawal from the contract, at its option.

8.4 The Buyer can only bring claims to compensation under the following conditions because of the fault if the rectification failed or we refused to carry out rectification. The right of the Buyer to bring further claims for compensation under the following conditions remains unaffected.

8.5 In accordance with statutory provisions, we are liable without restriction for intentional or grossly negligent breaches of duty as well as for damage caused by an injury to life, limb or health. Moreover, we shall only be liable if the breached contractual obligation is of material importance for achieving the purpose of the contract and only up to the amount of the typically foreseeable loss.

8.6 The limitation of liability in accordance with para. 5 applies accordingly to other than contractual claims for compensation, in particular claims arising from tortious liability, with the exception of claims in accordance with the German Product Liability Act. It further also applies to the benefit of our executives, employees, workers, representatives and vicarious agents.

8.7 If we have issued a guarantee or quality and/or shelf life in respect of the goods or parts thereof, we shall also be liable within the scope of this guarantee. However, we shall only be liable for damage that is based on the absence of the guaranteed quality or shelf life but does not occur directly on the goods, if the risk of such damage is apparent from the guarantee of quality and shelf life.

8.8 Any further liability is precluded without consideration of the legal nature of the claim brought. Insofar as the Vendor's liability is precluded or limited, this also applies to the personal liability of his executives, employees, workers, representatives and vicarious agents.

8.9 All claims for defects expire 24 months after the transfer or risk, unless any longer periods are mandatorily prescribed pursuant to Articles 438 I (2), 479 I and 634a I (2) German Federal Civil Code.

9. Retention of title

9.1 We shall retain possession of the goods (goods subject to retention of title) until all payments due under the purchase agreement have been received. The delivered goods shall pass into the possession of the Buyer only when the Buyer has fulfilled all of its liabilities under the business relationship, including subsidiary claims, claims for compensation and redemptions of cheques and bills of exchange. In the case of the cheque/bills of exchange procedure, the retention of title in all of its forms listed here shall expire not with the payment by cheque but only with the redemption of the bill of exchange.

9.2 The Buyer shall notify us in writing without delay of all third-party interventions, in particular of enforcement measures and other impairments of its property. The Buyer shall make good all damage and costs we incur, which arise through a breach of this obligation and through necessary measures to protect against third-party interventions.

9.3 If the Buyer does not comply with its obligation to make payment, despite our reminder, we can, without prior notice, demand that the Buyer release the goods that are still in its possession and subject to the retention of title. The Buyer shall bear the transport costs associated with this. The attachment of the matter subject to the retention of title by us always includes a withdrawal from the contract. We are entitled to dispose of the goods subject to the retention of title following their retention. The proceeds of disposal shall be offset against our outstanding claims.

10. Place of fulfilment

The place of fulfilment for payments is Bräunlingen, for our deliveries of goods the place of shipping.

11. Data processing

The Buyer agrees that we may process the data about the Buyer received in connection with the business relationship in accordance with the Federal Data Protection Act for the fulfilment of our business purposes, in particular to store them or transmit them to a credit reference agency, where this is done within the scope of the identified purpose of the contract or required for the preservation of our legitimate interests, and there is no reason to assume that the legitimate interests of the Buyer outweigh the preclusion of the processing of these data, in particular their transmission.

12. Severability clause

Amendments or additions to the contract or these General Terms and Conditions must be made in writing in order to obtain effectiveness. Should a provision of these General Conditions of Delivery and Payment be or become ineffective or unenforceable, this shall not affect the effectiveness of the remaining General Conditions of Delivery and Payment.

13. Jurisdiction and applicable law

13.1 The contractual relationship between the Buyer and ourselves is governed exclusively by the law of the Federal Republic of Germany, even if the Buyer has its place of residence or business abroad. Application of the Uniform Law on the International Purchase of Goods and the Uniform Law on the Formation of Contracts for the International Sale of Goods is precluded.

13.2 The Buyer is not authorised to cede claims arising from the purchase agreement without the permission of the Vendor.

13.3 If the Buyer is a merchant legal entity under public law or a special fund under public law, the place of jurisdiction for both parties - including for complaints regarding cheques and bills of exchange - is Donaueschingen, Germany. We are, however, also entitled to sue the Buyer at its general place of jurisdiction.

Contents by item numbers

Item no.	Page	Item no.	Page	Item no.	Page	Item no.	Page
09.ETK.89.28	31,53,65	09.T60KB8050	51	TS-10-25-200	69	TS-30075150	47,59,71
09.ETKD.LAN	31,53,65	09.T75K10005	23,29,41,51	TS-10-26-075	69	TS-30075200	47,59,71
09.SOC1000	68	09.T75K15005	23,29,41,51	TS-10-26-100	69	TS-30100075	47,59,71
09.SOC150	23	09.T75K20005	23,29,41,51	TS-10-26-150	69	TS-30100100	47,59,71
09.SOC150.93	23	09.T75K30005	23,29,41,51	TS-10-26-200	69	TS-30100150	47,59,71
09.SOC300	29	09.T75K60005	23,29,41,51	TS-10-27-075	69	TS-30100200	47,59,71
09.SOC300.93	29	09.TSM-KDX	17	TS-10-27-100	69	TS-30125075	47,59,71
09.SOC550	44	50.002.070	25,33,42,54,66	TS-10-27-150	69	TS-30125100	47,59,71
09.SOC700	56	50.003.046	25,33,42,54,66	TS-10-27-200	69	TS-30125150	47,59,71
09.T15.050	21,22,23,24,25	50.004.034	25,33,42,54,66	TS-10-29-075	69	TS-30125200	47,59,71
09.T15.100	21,22,24,25	51.002.070	25,33,42,54,66	TS-10-29-100	69	TS-30150075	47,59,71
09.T15.150	21,22,24,25	51.003.046	25,33,42,54,66	TS-10-29-150	69	TS-30150100	47,59,71
09.T150.1131A	21	51.004.034	25,33,42,54,66	TS-10-29-200	69	TS-30150150	47,59,71
09.T150A	21	53.075.075.30	24,32,44,56,68	TS-10-30-075	69	TS-30150200	47,59,71
09.T150G	21	53.075.075.65	24,32,44,56,68	TS-10-30-100	69	TS-30175075	47,59,71
09.T1530.46	35	53.150.075.30	24,32,44,56,68	TS-10-30-150	69	TS-30175100	47,59,71
09.T15K10005	22,28,41,51,63	53.150.075.65	24,32,44,56,68	TS-10-30-200	69	TS-30175150	47,59,71
09.T15K10010	22,28,41,51,63	53.150.150.30	24,32,44,56,68	TS-10-31-075	69	TS-30175200	47,59,71
09.T15K10015	22,28,41,51,63	53.150.150.65	24,32,44,56,68	TS-10-31-100	69	TS-30200075	47,59,71
09.T15K20005	22,28,41,51,63	EK-5873	31,53,65	TS-10-31-150	69	TS-30200100	47,59,71
09.T15K20010	22,28,41,51,63	EK-5874	31,53,65	TS-10-31-200	69	TS-30200150	47,59,71
09.T15K20015	22,28,41,51,63	EK-6163	17	TS-10-32-075	69	TS-30200200	47,59,71
09.T15K30005	22,28,41,51,63	EK-6194	17	TS-10-32-100	69	TS-30225075	47,59,71
09.T15K30010	22,28,41,51,63	EK-6195	17	TS-10-32-150	69	TS-30225100	47,59,71
09.T15K30015	22,28,41,51,63	EK-6303	17	TS-10-32-200	69	TS-30225150	47,59,71
09.T15KB050	22	TS-10-01	67	TS-10-35-075	69	TS-30225200	47,59,71
09.T15KB100	22	TS-10-01-D050	66	TS-10-35-100	69	TS-30250075	47,59,71
09.T15KB150	22	TS-10-02	67	TS-10-35-150	69	TS-30250100	47,59,71
09.T15KB2050	23	TS-10-03	67	TS-10-35-200	69	TS-30250150	47,59,71
09.T30.050	27,28,29,30,32,33	TS-10-04	67	TS-10-36-075	69	TS-30250200	47,59,71
09.T30.100	27,28,30,32,33	TS-10-05	67	TS-10-36-100	69	TS-30275075	47,59,71
09.T30.150	27,28,30,32,33	TS-10-06	67	TS-10-36-150	69	TS-30275100	47,59,71
09.T30.F200	34	TS-10-10-050	67	TS-10-36-200	69	TS-30275150	47,59,71
09.T30.F300	34	TS-10-10-100	67	TS-10-60	66	TS-30275200	47,59,71
09.T30.F400	34	TS-10-10-D050	66	TS-10-70	66	TS-30300075	47,59,71
09.T30.F500	34	TS-10-10-D100	66	TS-10-80	66	TS-30300100	47,59,71
09.T30.F600	34	TS-10-11-050	67	TS-10-KB050	63	TS-30300150	47,59,71
09.T300.1131A	27	TS-10-11-100	67	TS-10-KB100	63	TS-30300200	47,59,71
09.T300A	27	TS-10-12-050	67	TS-10-KB150	63	TS-5-01	43
09.T300G	27	TS-10-12-100	67	TS-10-M075	70	TS-5-01-D050	42
09.T300KB050	30	TS-10-13-050	67	TS-10-M100	70	TS-5-02	43
09.T300KB100	30	TS-10-13-100	67	TS-10-M150	70	TS-5-03	43
09.T300KB150	30	TS-10-14-050	67	TS-10-M200	70	TS-5-04	43
09.T300KB2050	52	TS-10-14-100	67	TS-10-S075	70	TS-5-05	43
09.T300KB2100	52	TS-10-15-050	67	TS-10-S100	70	TS-5-06	43
09.T300KB2150	52	TS-10-15-100	67	TS-10-S150	70	TS-5-10-050	43
09.T300KB3050	64	TS-10-16-050	67	TS-10-S200	70	TS-5-10-100	43
09.T300KB3100	64	TS-10-16-100	67	TS-10K180-050	62	TS-5-10-D050	42
09.T300KB3150	64	TS-10-20-075	69	TS-10K180-100	62	TS-5-10-D100	42
09.T30100150	24	TS-10-20-100	69	TS-10K180-150	62	TS-5-11-050	43
09.T30100300	32	TS-10-20-150	69	TS-10K181-050	62	TS-5-11-100	43
09.T3015.24	35	TS-10-20-200	69	TS-10K181-100	62	TS-5-12-050	43
09.T30150150	24	TS-10-21-075	69	TS-10K181-150	62	TS-5-12-100	43
09.T30150300	32	TS-10-21-100	69	TS-10K240-050	62	TS-5-13-050	43
09.T3050150	24	TS-10-21-150	69	TS-10K240-100	62	TS-5-13-100	43
09.T3050300	32	TS-10-21-200	69	TS-10K240-150	62	TS-5-14-050	43
09.T30K10005	30,52,64	TS-10-22-075	69	TS-10K241-050	62	TS-5-14-100	43
09.T30K10010	30,52,64	TS-10-22-100	69	TS-10K241-100	62	TS-5-15-050	43
09.T30K10015	30,52,64	TS-10-22-150	69	TS-10K241-150	62	TS-5-15-100	43
09.T30K20005	30,52,64	TS-10-22-200	69	TS-10K300-050	62	TS-5-16-050	43
09.T30K20010	30,52,64	TS-10-23-075	69	TS-10K300-100	62	TS-5-16-100	43
09.T30K20015	30,52,64	TS-10-23-100	69	TS-10K300-150	62	TS-5-20-075	45
09.T30K30005	30,52,64	TS-10-23-150	69	TS-10K360-050	62	TS-5-20-100	45
09.T30K30010	30,52,64	TS-10-23-200	69	TS-10K360-100	62	TS-5-20-150	45
09.T30K30015	30,52,64	TS-10-24-075	69	TS-10K360-150	62	TS-5-20-200	45
09.T30KB050	28	TS-10-24-100	69	TS-30050075	47,59,71	TS-5-21-075	45
09.T30KB100	28	TS-10-24-150	69	TS-30050100	47,59,71	TS-5-21-100	45
09.T30KB150	28	TS-10-24-200	69	TS-30050150	47,59,71	TS-5-21-150	45
09.T30KB4050	29	TS-10-25-075	69	TS-30050200	47,59,71	TS-5-21-200	45
09.T3X15.102	35	TS-10-25-100	69	TS-30075075	47,59,71	TS-5-22-075	45
09.T45KB6050	41	TS-10-25-150	69	TS-30075100	47,59,71	TS-5-22-100	45

Item no.	Page	Item no.	Page	Item no.	Page	Item no.	Page
TS-5-22-150	45	TS-5K180-050	40	TS-7-32-100	57	TSSA00700061	72
TS-5-22-200	45	TS-5K180-100	40	TS-7-32-150	57	TSSA00700070	72
TS-5-23-075	45	TS-5K180-150	40	TS-7-32-200	57	TSSA00700071	72
TS-5-23-100	45	TS-7-01	55	TS-7-35-075	57	TSSA00700080	72
TS-5-23-150	45	TS-7-01-D050	54	TS-7-35-100	57	TSSA00700090	72
TS-5-23-200	45	TS-7-02	55	TS-7-35-150	57	TSSG00500060	72
TS-5-24-075	45	TS-7-03	55	TS-7-35-200	57	TSSG00500061	72
TS-5-24-100	45	TS-7-04	55	TS-7-36-075	57	TSSG00500070	72
TS-5-24-150	45	TS-7-05	55	TS-7-36-100	57	TSSG00500071	72
TS-5-24-200	45	TS-7-06	55	TS-7-36-150	57	TSSG00500080	72
TS-5-25-075	45	TS-7-10-050	55	TS-7-36-200	57	TSSG00500090	72
TS-5-25-100	45	TS-7-10-100	55	TS-7-60	54	TSSG00700060	72
TS-5-25-150	45	TS-7-10-D050	54	TS-7-70	54	TSSG00700061	72
TS-5-25-200	45	TS-7-10-D100	54	TS-7-80	54	TSSG00700070	72
TS-5-26-075	45	TS-7-11-050	55	TS-7-KB050	51	TSSG00700071	72
TS-5-26-100	45	TS-7-11-100	55	TS-7-KB100	51	TSSG00700080	72
TS-5-26-150	45	TS-7-12-050	55	TS-7-KB150	51	TSSG00700090	72
TS-5-26-200	45	TS-7-12-100	55	TS-7-M075	46,58	TSE-00-10-050	61,64
TS-5-27-075	45	TS-7-13-050	55	TS-7-M100	46,58	TSE-00-10-075	61
TS-5-27-100	45	TS-7-13-100	55	TS-7-M150	46,58	TSE-00-10-100	61,64
TS-5-27-150	45	TS-7-14-050	55	TS-7-M200	46,58	TSE-00-10-150	61,64
TS-5-27-200	45	TS-7-14-100	55	TS-7-S075	46,58,70	TSE-00-10-200	61
TS-5-28-075	45	TS-7-15-050	55	TS-7-S100	46,58,70	TSE-00-5-050	39,41
TS-5-28-100	45	TS-7-15-100	55	TS-7-S150	46,58,70	TSE-00-5-075 39	39
TS-5-28-150	45	TS-7-16-050	55	TS-7-S200	46,58,70	TSE-00-5-100 39	39
TS-5-28-200	45	TS-7-16-100	55	TS-7K120-050	50	TSE-00-5-150 39	39
TS-5-29-075	45	TS-7-20-075	57	TS-7K120-100	50	TSE-00-5-200 39	39
TS-5-29-100	45	TS-7-20-100	57	TS-7K120-150	50	TSE-00-7-050	49,51,52
TS-5-29-150	45	TS-7-20-150	57	TS-7K121-050	50	TSE-00-7-075	49
TS-5-29-200	45	TS-7-20-200	57	TS-7K121-100	50	TSE-00-7-100	49,52
TS-5-30-075	45	TS-7-21-075	57	TS-7K121-150	50	TSE-00-7-150	49,52
TS-5-30-100	45	TS-7-21-100	57	TS-7K160-050	50	TSE-00-7-200	49
TS-5-30-150	45	TS-7-21-150	57	TS-7K160-100	50	Z14	17
TS-5-30-200	45	TS-7-21-200	57	TS-7K160-150	50		
TS-5-31-075	45	TS-7-22-075	57	TS-7K161-050	50		
TS-5-31-100	45	TS-7-22-100	57	TS-7K161-100	50		
TS-5-31-150	45	TS-7-22-150	57	TS-7K161-150	50		
TS-5-31-200	45	TS-7-22-200	57	TS-7K200-050	50		
TS-5-32-075	45	TS-7-23-075	57	TS-7K200-100	50		
TS-5-32-100	45	TS-7-23-100	57	TS-7K200-150	50		
TS-5-32-150	45	TS-7-23-150	57	TS-7K240-050	50		
TS-5-32-200	45	TS-7-23-200	57	TS-7K240-100	50		
TS-5-33-075	45	TS-7-24-075	57	TS-7K240-150	50		
TS-5-33-100	45	TS-7-24-100	57	TS5-A0500	39		
TS-5-33-150	45	TS-7-24-150	57	TS5-A0515	39		
TS-5-33-200	45	TS-7-24-200	57	TS5-A0700	49		
TS-5-60	42	TS-7-25-075	57	TS5-A0715	49		
TS-5-70	42	TS-7-25-100	57	TS5-A1000	61		
TS-5-80	42	TS-7-25-150	57	TS5-A1015	61		
TS-5-KB050	41	TS-7-25-200	57	TS5-G0500	39		
TS-5-KB100	41	TS-7-26-075	57	TS5-G0700	49		
TS-5-KB150	41	TS-7-26-100	57	TS5-G1000	61		
TS-5-S075	46	TS-7-26-150	57	TS5-GA500-1	73		
TS-5-S100	46	TS-7-26-200	57	TS5-GA500-2	73		
TS-5-S150	46	TS-7-27-075	57	TS5-GA500-3	73		
TS-5-S200	46	TS-7-27-100	57	TS5-GA500-4	73		
TS-5K090-050	40	TS-7-27-150	57	TS5-GA700-1	73		
TS-5K090-100	40	TS-7-27-200	57	TS5-GA700-2	73		
TS-5K090-150	40	TS-7-29-075	57	TS5-GA700-3	73		
TS-5K091-050	40	TS-7-29-100	57	TS5-GA700-4	73		
TS-5K091-100	40	TS-7-29-150	57	TS5-TSM-01	74		
TS-5K091-150	40	TS-7-29-200	57	TS5-TSM-02	74		
TS-5K120-050	40	TS-7-30-075	57	TS5-TSM-03	74		
TS-5K120-100	40	TS-7-30-100	57	TS5-TSM-04	74		
TS-5K120-150	40	TS-7-30-150	57	TSSA00500060	72		
TS-5K121-050	40	TS-7-30-200	57	TSSA00500061	72		
TS-5K121-100	40	TS-7-31-075	57	TSSA00500070	72		
TS-5K121-150	40	TS-7-31-100	57	TSSA00500071	72		
TS-5K150-050	40	TS-7-31-150	57	TSSA00500080	72		
TS-5K150-100	40	TS-7-31-200	57	TSSA00500090	72		
TS-5K150-150	40	TS-7-32-075	57	TSSA00700060	72		



Offers apply to commerce, craft and industry. Subject to technical modifications and price changes due to increased price of materials. Prices shown are exclusive of statutory value added tax. Subject to printing errors and mistakes.